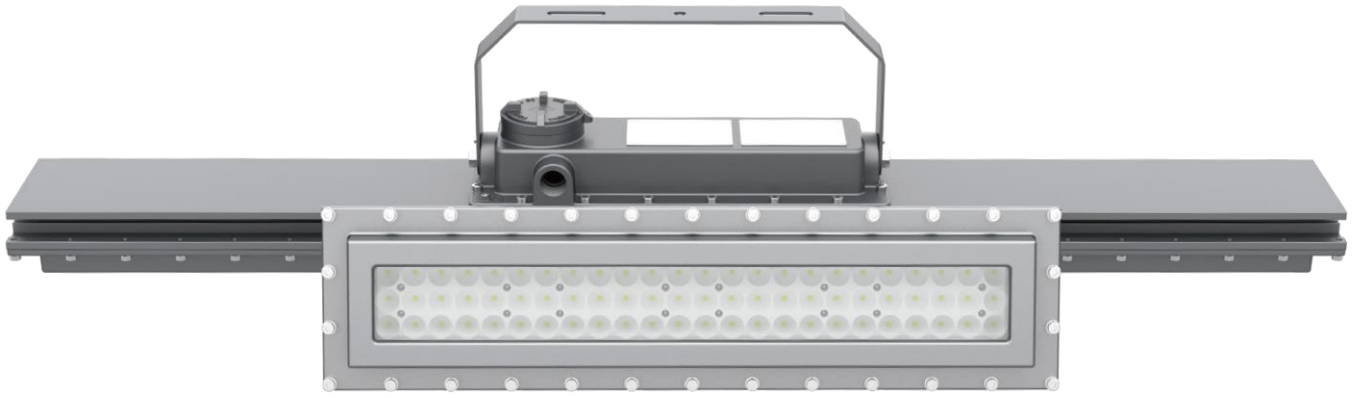




VOC-EX-LN-SERIES EXPLOSION PROOF LED LINEAR LUMINAIRES

hazardous locations

VOCARE-LEDLIGHT
www.vocare-ledlight.com



VOC-EX-LN-SERIES EXPLOSION PROOF LED LINEAR LUMINAIRES

Product description

Tempered glass + ADC12 and 6063 aluminum housing for VOC-EX-LN explosion proof led linear light is shock-resistant, anti-vibration, can withstand 7J impact, and is equipped with micro-light elements to reduce direct visual contact with the light source, prevent glare, and replace the old and prone to failure Fluorescent light fixtures.

The electrical components inside the explosion-proof lamps are completely sealed and can work underwater (3 meters, we have a long time of hydraulic testing and heavy pressure testing), and the light source chamber is completely separated from the power supply, which effectively avoids the impact of electric sparks on the electrical components or optical components, resulting in explosions.

The explosion-proof performance is reliable and the special process treatment, suitable for salt water and corrosive environments, there are a variety of options to choose, such as emergency, installation, color temperature, length, etc, suitable for harsh environment in Zone 1&21, Zone 2&22.

Features

- Private-mold designed to be Curved Fin Shape, maximize the best heat transmit.
- Housing -Aluminum alloy (ADC12).
- Lens -tempered glass shock & vibration resistant, Super clear, >90% light transmit.
- LED: LM80 certified, high efficacy, low decay, long lifespan. 130 lm/W ± 5 , up to 26400 lm.
- Meanwell LED Driver, >90% driver efficacy.
- Circuit design: 4KV/6KV Surge Protection power supply.

Certification

ATEX:

- Ex II 2G Ex db op is IIC T5...T6 Gb;
- Ex II 2D Ex tb op is IIIC T94°C...T89°C ...T84°C Db;
- IP66;
- Certificate No: SEV 19 ATEX 0332 X

IECEx:

- Ex db op is IIC T5...T6 Gb;
- Ex tb op is IIIC T94°C...T89°C ...T84°C Db;
- IP66;
- Certificate No: IECEx SEV 19.0039X

Application

- Wastewater treatment, oil and gas refineries, drilling rigs, petrochemical facilities, food and beverage facilities, tunnels, outdoor wall and stanchion mounted general area lighting, and where flammable vapors, gases, ignitable dusts, fibers or flyings are present.
- Applies to hazardous locations of Zone 1 and Zone2 with explosive gas atmosphere.
- Applies to hazardous locations of Zone 21 and Zone22 with explosive dust atmosphere.

Warranty

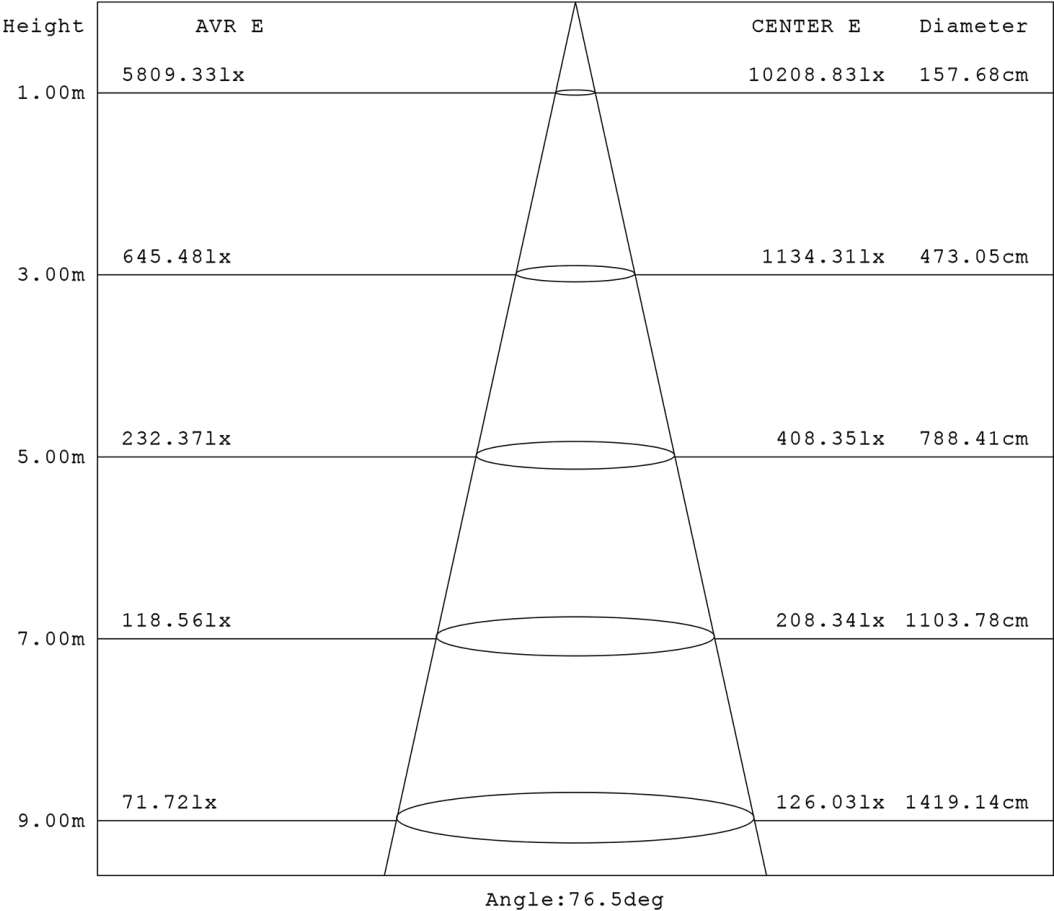
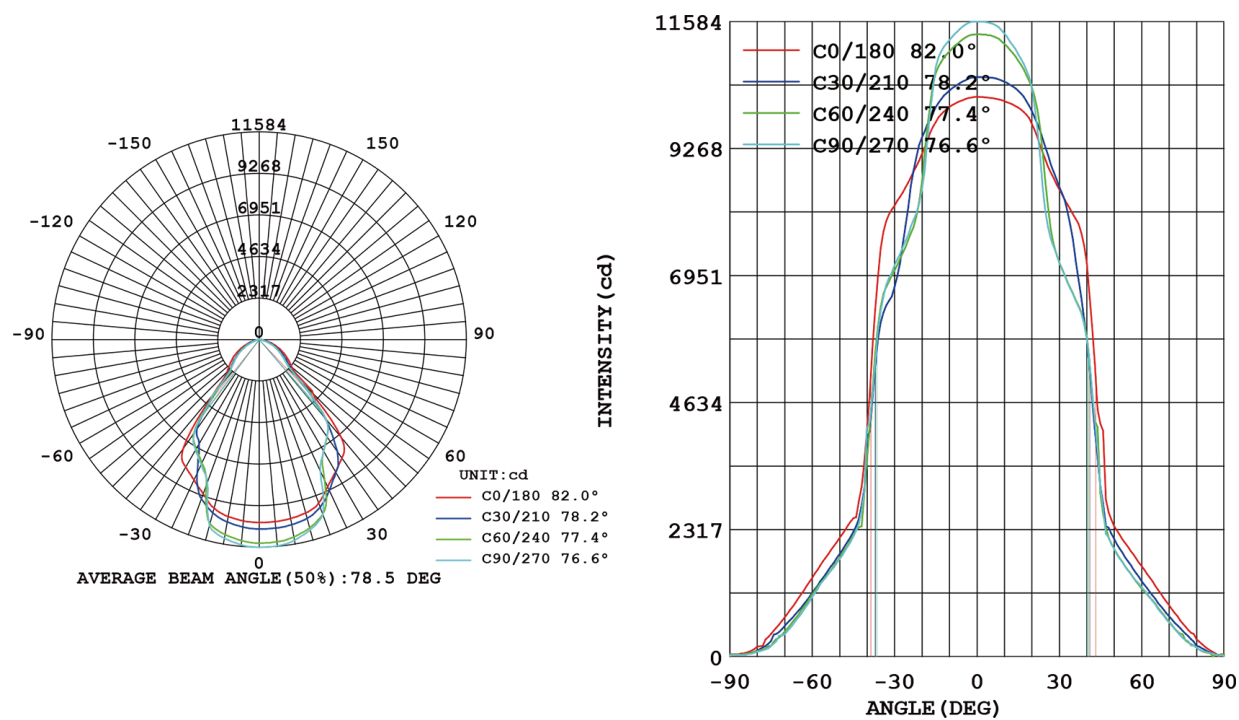
3-Year Standard Warranty



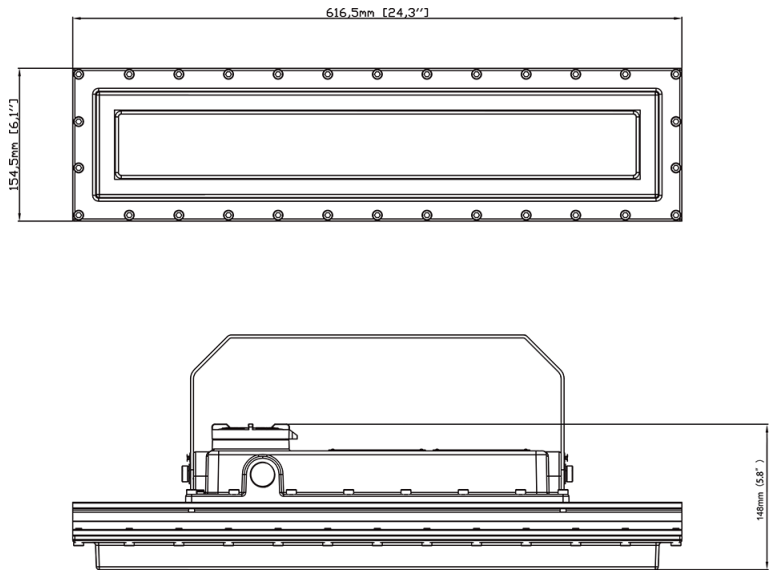
(Please see the specification of UL HazLoc version)



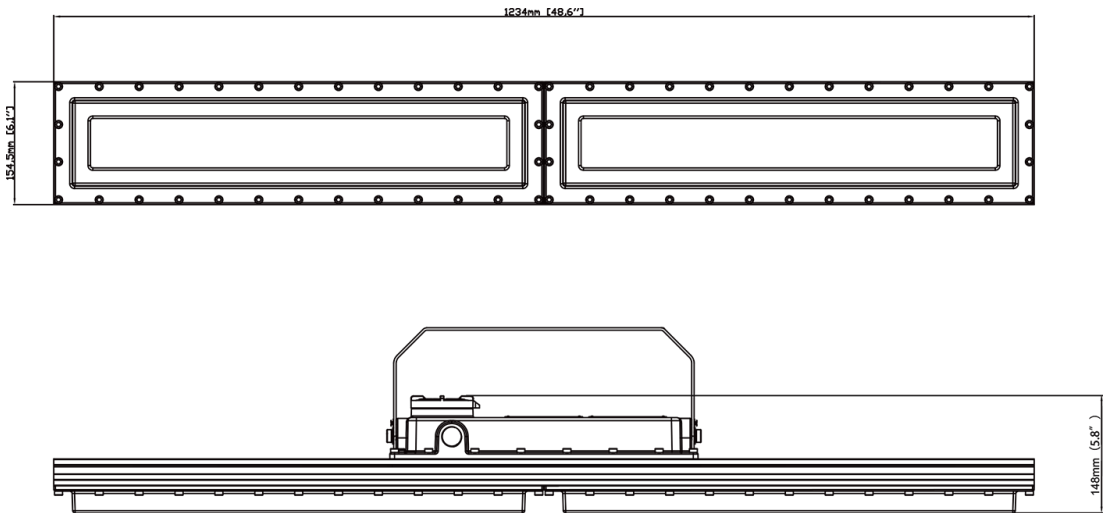
Lighting Distribution



Size and packaging



Product Model	Product Size	Carton Size	QTY/CTN	Net Weight	Gross Weight
VOC-EX-LN-50XXXX	617×155×148 mm / 24.3×6.1×5.8"	690×290×240mm/27.2×11.5×9.5"	1	11.4 kg/25.2 lbs	11.7 kg/25.8 lbs
VOC-EX-LN-60XXXX	617×155×148 mm / 24.3×6.1×5.8"	690×290×240mm/27.2×11.5×9.5"	1	11.4 kg/25.2 lbs	11.7 kg/25.8 lbs
VOC-EX-LN-80XXXX	617×155×148 mm / 24.3×6.1×5.8"	690×290×240mm/27.2×11.5×9.5"	1	11.4 kg/25.2 lbs	11.7 kg/25.8 lbs
VOC-EX-LN-100XXXX	617×155×148 mm / 24.3×6.1×5.8"	690×290×240mm/27.2×11.5×9.5"	1	11.4 kg/25.2 lbs	11.7 kg/25.8 lbs

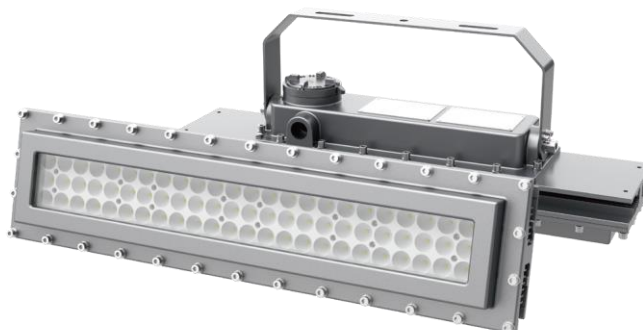


Product Model	Product Size	Carton Size	QTY/CTN	Net Weight	Gross Weight
VOC-EX-LN-120XXXX	1235×155×148mm/48.6×6.1×5.8"	1310×290×240mm/51.6×11.5×9.5"	1	19.4 kg/42.8 lbs	20.7 kg/45.7 lbs
VOC-EX-LN-150XXXX	1235×155×148mm/48.6×6.1×5.8"	1310×290×240mm/51.6×11.5×9.5"	1	19.4 kg/42.8 lbs	20.7 kg/45.7 lbs
VOC-EX-LN-180XXXX	1235×155×148mm/48.6×6.1×5.8"	1310×290×240mm/51.6×11.5×9.5"	1	19.4 kg/42.8 lbs	20.7 kg/45.7 lbs
VOC-EX-LN-200XXXX	1235×155×148mm/48.6×6.1×5.8"	1310×290×240mm/51.6×11.5×9.5"	1	19.4 kg/42.8 lbs	20.7 kg/45.7 lbs
VOC-EX-LN-240XXXX	1235×155×148mm/48.6×6.1×5.8"	1310×290×240mm/51.6×11.5×9.5"	1	19.4 kg/42.8 lbs	20.7 kg/45.7 lbs

Technical parameter

ProductModel	VOC-EX-LN-50~100XXXX	VOC-EX-LN-120~240XXXX
Type	LED Explosion proof Linear Light	LED Explosion proof Linear Light
luminous efficiency	120-140lm/W	120-140lm/W
Power (W)	50W / 60W / 80W / 100W	120W / 150W / 185W / 200W / 240W
Voltage - Frequency	100-277Vac 50-60Hz	100-277Vac 50-60Hz
Color Temp	Provides 3000K to 6500K	Provides 3000K to 6500K
CRI (Ra) (typ.)	≥70	≥70
Power Supply	High Efficiency LED driver, more than 50000 hours lifespan	High Efficiency LED driver, more than 50000 hours lifespan
Beam Angle	120°	120°
Power Factor	>0.95	>0.95
Rated Lifetime - L70 (hrs.)	50,000	50,000
THD	<10%	<10%
Operating temperature	-40 °C to +50 °C	-40 °C to +50 °C
Entry Size	3/4"-14 NPT or M25 X1.5 or M26 X1.5	3/4"-14 NPT or M25 X1.5 or M26 X1.5
Cable	Three-core rubber cable, IEC (CE) certification, with 0.5m cable (Standard)	Three-core rubber cable, IEC (CE) certification, with 0.5m cable (Standard)

Product display

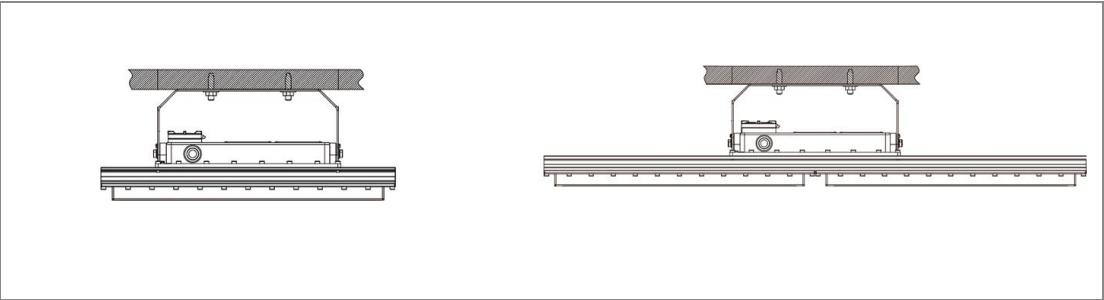
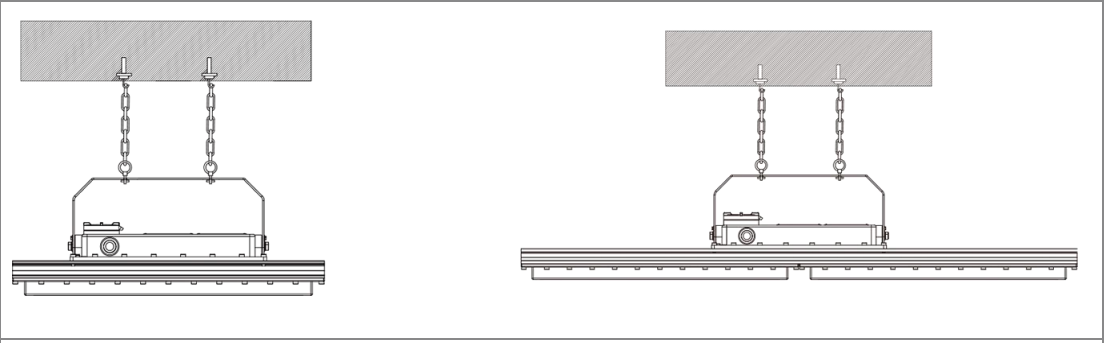
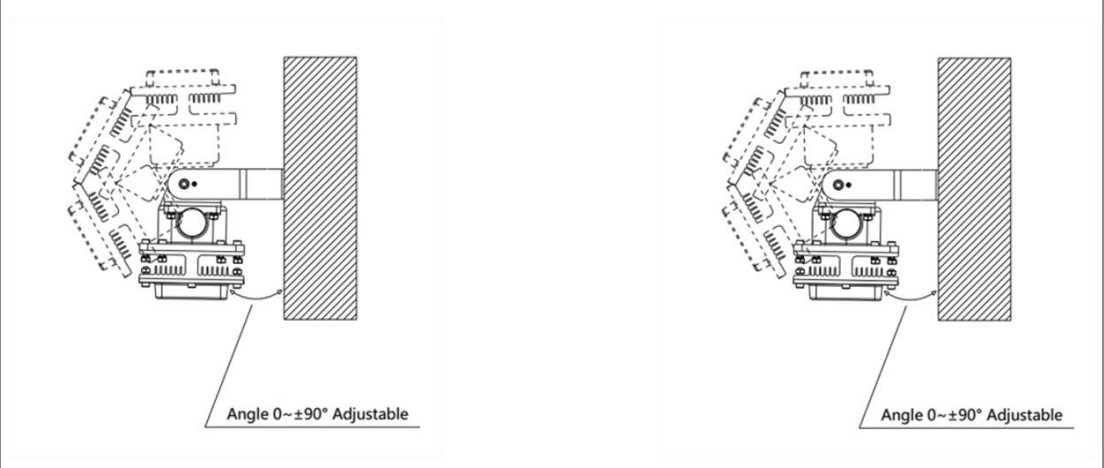
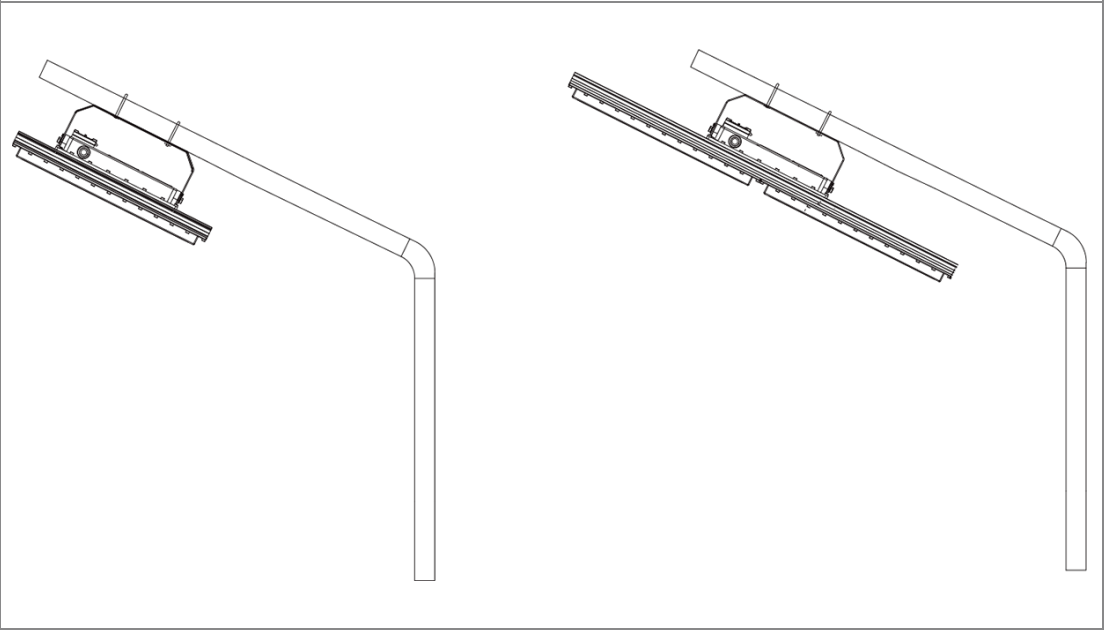


VOC-EX-LN-(50W~100W)



VOC-EX-LN-(120W~240W)

Installation method

A.Ceiling mount	
B.Drop mount	
C.WM - Wall Mount	
D.Pole Mounting	

Vocare-Ledlight

Tel: +31 (0)85 - 0060455
Email: sales@vocare-ledlight.com www.vocare-ledlight.com
Add: Enkweg 6B, 8131VH Wijhe, Netherlands