

VOCARE
LED LIGHT



LED Highbay

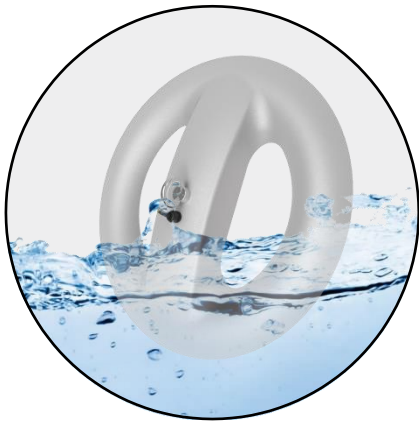
Ideal for warehouse, industrial facility, exhibition centers,
shopping malls, stadiums, public area etc



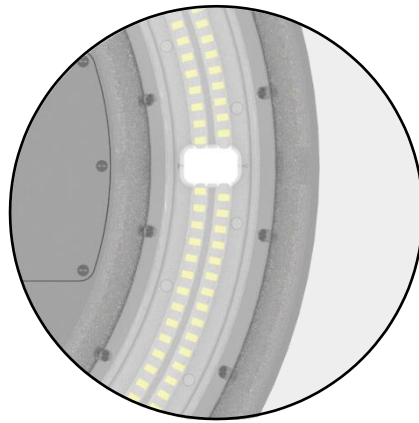
RoHS

“Super Loop Patent”

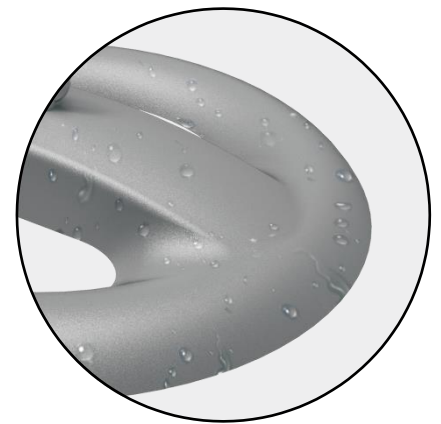
*Annular luminous surface,
reduce glare according to
the human eye focusing principle*



**Waterproof
IP66**



Transmittance > 94%



**Hydrophobic
surface**

**Superior to traditional round high bay lights,
making it your unique product**



WATTAGE	50/100/150/200/240W
LAMP LUMINOUS FLUX	165LM/W \pm 5%
CRI	Ra>70/80
CCT	2700-6500K
RATED VOLTAGE	AC 100-240V 277V~, 50/60Hz
POWER FACTOR	>0.95
BEAM ANGLE	60°/90°/120°
IP GRADE	IP66
OPERATING TEMP	-40 °C~55 °C

Highbay-50W

8,250LM \pm 5%
3.2kg \pm 5%
 ϕ 380x63mm

Highbay-100W

16,500LM \pm 5%
3.8kg \pm 5%
 ϕ 380x63mm

Highbay-150W

24,750LM \pm 5%
3.8kg \pm 5%
 ϕ 380x63mm

Highbay-200W

33,000LM \pm 5%
5.6kg \pm 5%
 ϕ 500x68mm

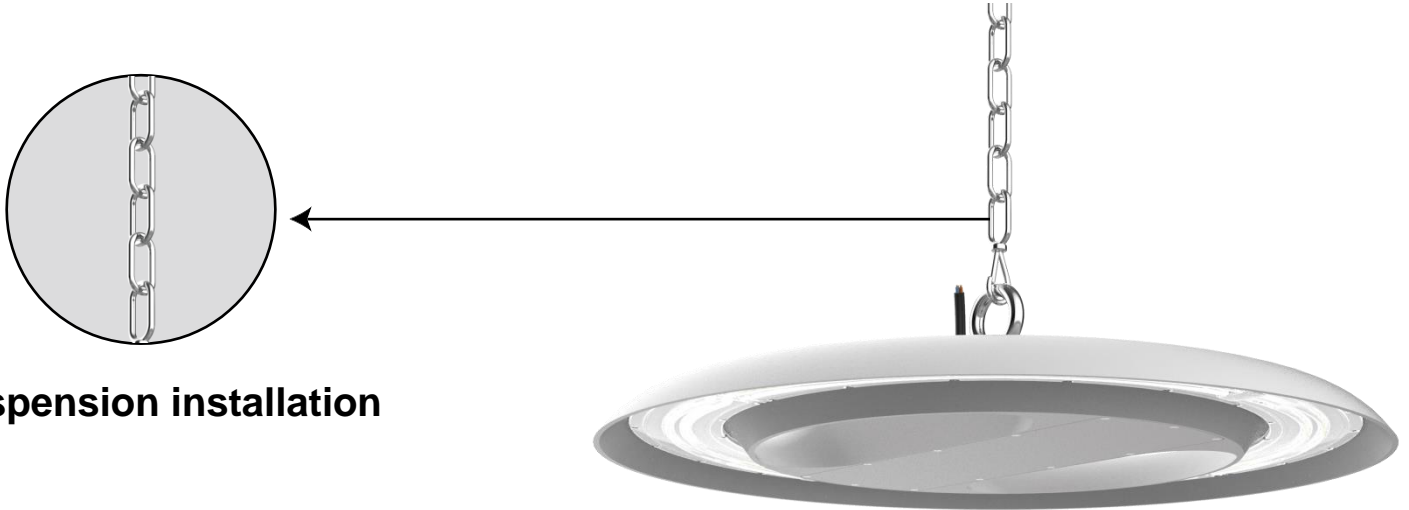
Highbay-240W

39,600LM \pm 5%
5.6kg \pm 5%
 ϕ 500x68mm

| Installation



Ceiling installation



Suspension installation

| Application



Curve surface design
(Suitable for dusty places)



IK10
(Suitable for indoor stadium)

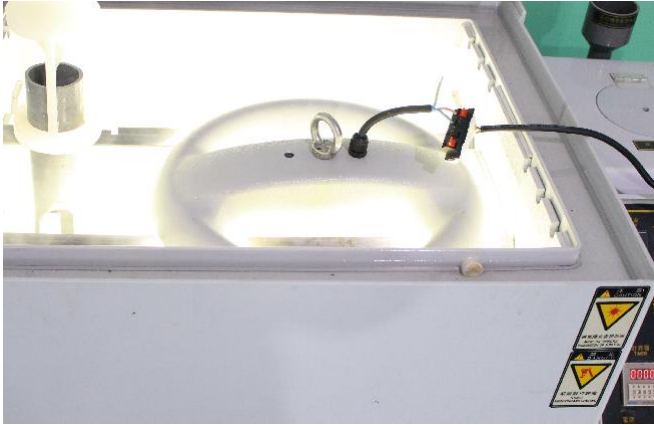


165LM/W
(Suitable for high precision mill)



30/50/80/100/150/200/240W
(Suitable for any indoor places)

| Test



Salt Spray Test

The heat sink processed by oxidization and powder spraying so that it has good corrosion resistance



UV Aging Test

The test time is about 720 hours. After test the lamp working regularly, no discoloration appearance , no yellowing of the PC lens .



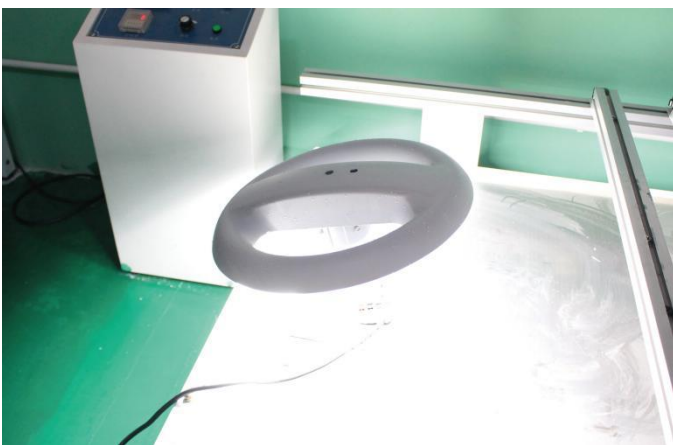
High-Low Temperature Test

The test equipment opening 4hours, keeping temperature $< -40^{\circ}\text{C}$ the lamp working fine. The test equipment opening 4hours keeping temperature $> 55^{\circ}\text{C}$, the lamp keep working fine



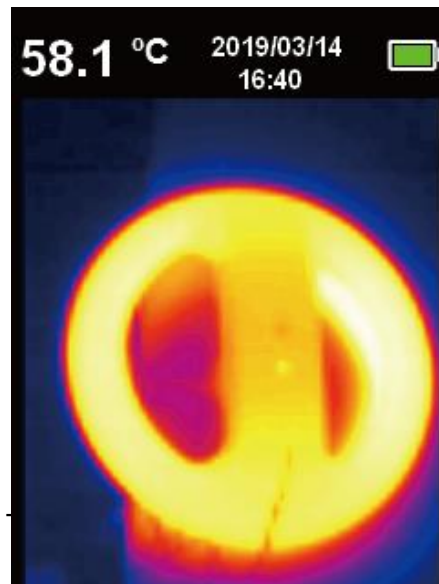
Withstand Voltage Test

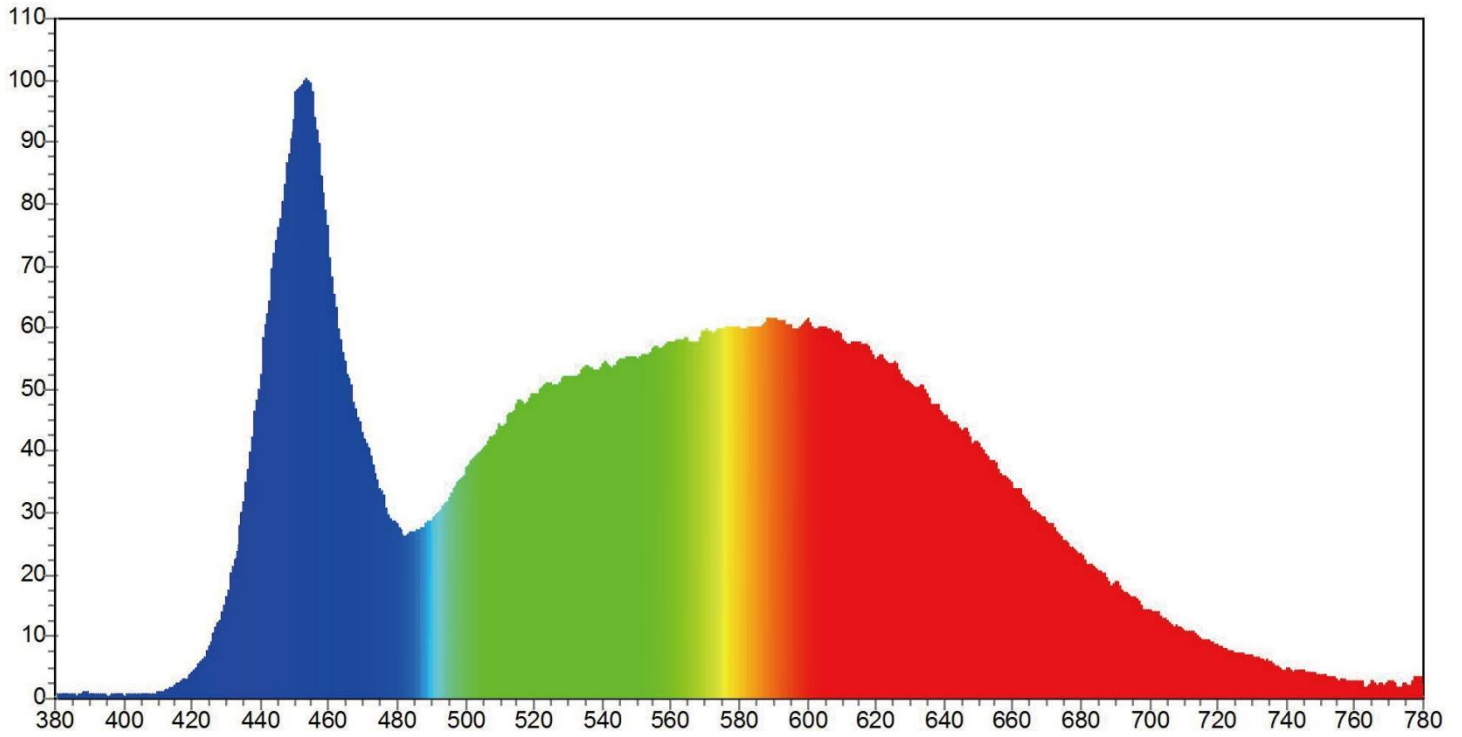
Testing whether the withstand voltage is within the specified value, to avoid sudden voltage surges such as short circuit, operation error, fault, etc, causing breakdown or accidents



Vibration Test

Vibration test is a simulation of various vibration condition including transportation, installation and using, to ensure system robustness.

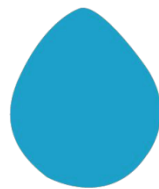




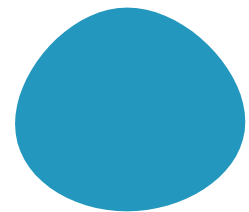
Spectrum Parameters					
x: 0.3393	y: 0.3504	R1: 80.1	R2: 84.8	R3: 85.7	
u: 0.2080	v: 0.3221	R4: 80.1	R5: 80.1	R6: 76.1	
WD: 566.5 nm	WP: 447.5nm	R7: 81.8	R8: 67.3	R9: 7.1	
HW: 23.0 nm	Purity: 0.069	R10: 60.8	R11: 78.2	R12: 58.8	
CCT: 5224 K	Ra: 79.5	R13: 80.0	R14: 91.6	R15: 77.8	
DUV : 0.0018		R%: 26.9	G%: 43.1	B%: 30.0	
Kred 18.71%	Kgreen 76.09%	Kblue 5.20%			
Electrical					
Flux: 33242.298 lm		P: 165.797 lm/w		P: 4247.19 mw	
I: 906.4 mA	V: 221.20 V	P: 200.5 w		PF: 0.9650	



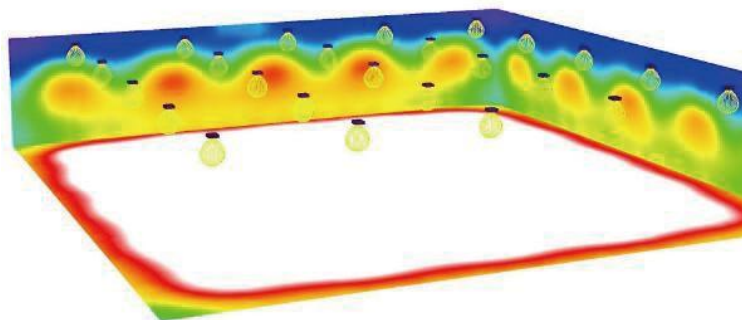
60°



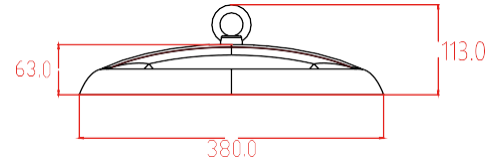
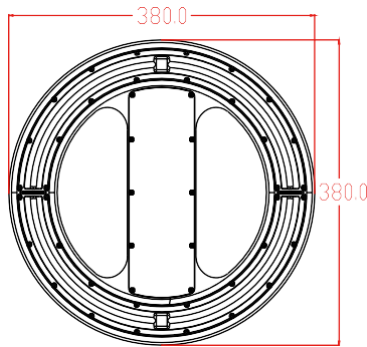
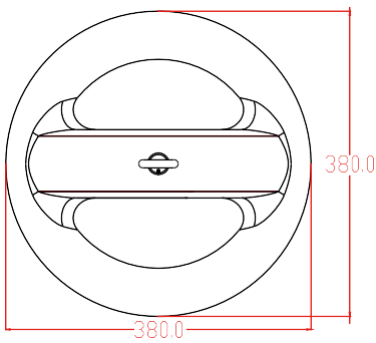
90°



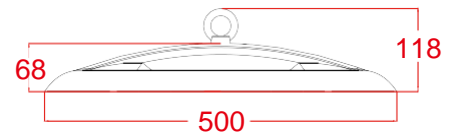
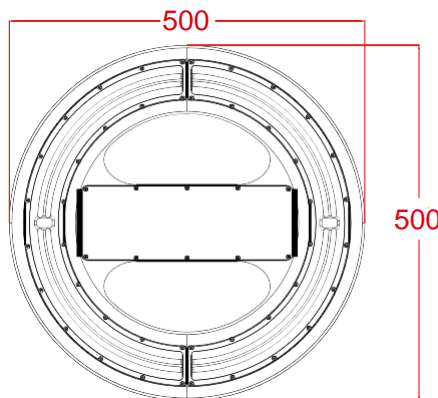
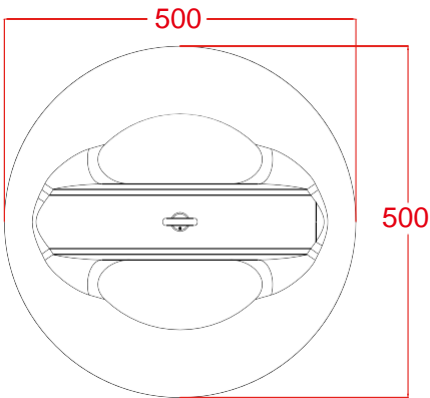
120°



| Dimensions



Model	Size of box	Gross Weight
VOC - Highbay-50W	44*43*19 cm	5.5 KG
VOC - Highbay-100W	44*43*19 cm	6.0 KG
VOC - Highbay-150W	44*43*19 cm	6.2 KG



Model	Size of box	Gross Weight
VOC - Highbay-200W	57*57*20 cm	8.8 KG
VOC - Highbay-240W	57*57*20 cm	8.8 KG