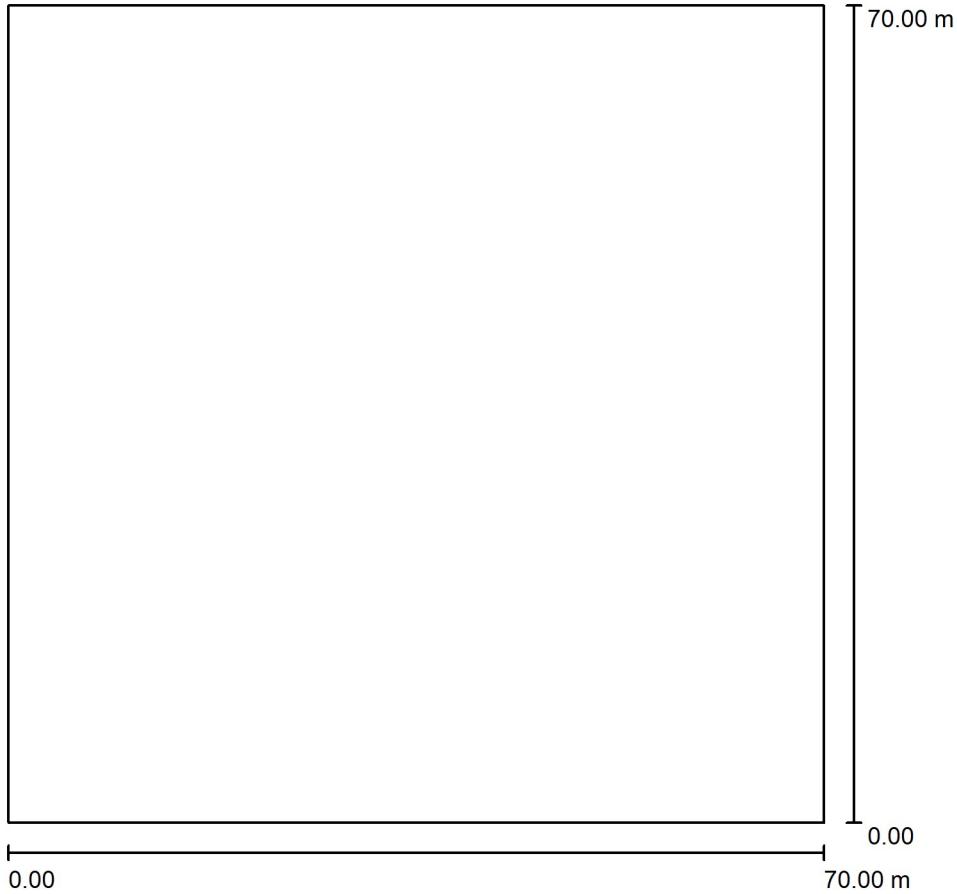




Operator
Telephone
Fax
e-Mail

Exterior Scene 1 / Planning data



Maintenance factor: 0.80, ULR (Upward Light Ratio): 12.5%

Scale 1:649

Luminaire Parts List

No.	Pieces	Designation (Correction Factor)	Φ (Luminaire) [lm]	Φ (Lamps) [lm]	P [W]
1	6	LED MAX sport ULTRALUX-300W-60D LED FLOOD LIGHT (1.000)	49519	49798	299.5
Total:			297117	298788	1797.2

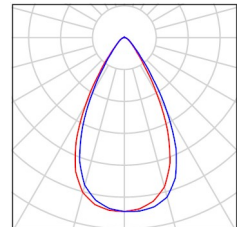


Operator
Telephone
Fax
e-Mail

Exterior Scene 1 / Luminaire parts list

6 Pieces LED MAX sport ULTRALUX-300W-60D LED FLOOD LIGHT
Article No.: LED MAX sport ULTRALUX-300W-60D
Luminous flux (Luminaire): 49519 lm
Luminous flux (Lamps): 49798 lm
Luminaire Wattage: 299.5 W
Luminaire classification according to CIE: 100
CIE flux code: 87 96 99 100 100
Fitting: 1 x LED MAX sport ULTRALUX-300W-60D (Correction Factor 1.000).

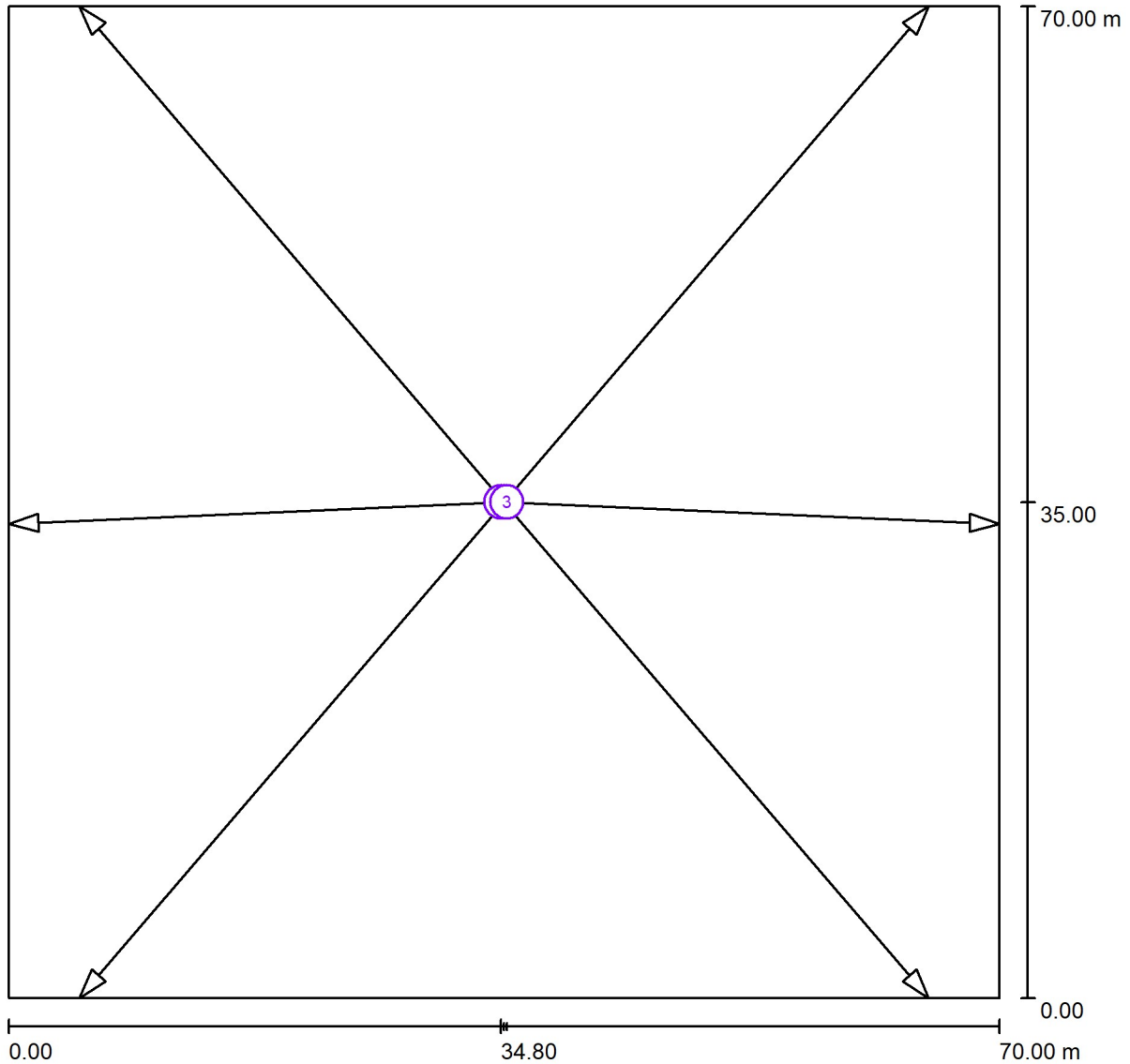
See our luminaire catalog for an image of the luminaire.





Operator
Telephone
Fax
e-Mail

Exterior Scene 1 / Sport Luminaires (Coordinates List)



Scale 1 : 501

List of the Sport Luminaires

Luminaire	Index	Position [m]			Aiming Point [m]			Angle [°]	Alignment	Pole
		X	Y	Z	X	Y	Z			
LED MAX sport ULTRALUX-300W-60D LED FLOOD LIGHT	1	35.000	35.000	16.000	5.000	0.000	0.000	19.1	(C 90, G IMax)	/
LED MAX sport ULTRALUX-300W-60D LED FLOOD LIGHT	1	35.000	35.000	16.000	65.000	0.000	0.000	19.1	(C 90, G IMax)	/
LED MAX sport ULTRALUX-300W-60D LED FLOOD LIGHT	1	35.000	35.000	16.000	5.000	70.000	0.000	19.1	(C 90, G IMax)	/
LED MAX sport ULTRALUX-300W-60D LED FLOOD LIGHT	1	35.000	35.000	16.000	65.000	70.000	0.000	19.1	(C 90, G IMax)	/



Operator
Telephone
Fax
e-Mail

Exterior Scene 1 / Sport Luminaires (Coordinates List)

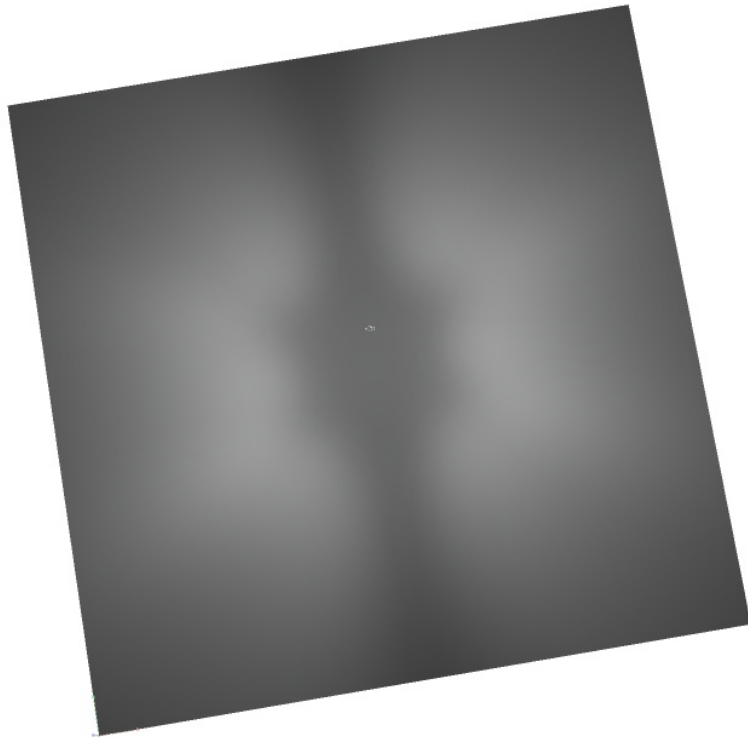
List of the Sport Luminaires

Luminaire	Index	Position [m]			Aiming Point [m]			Angle [°]	Alignment	Pole
		X	Y	Z	X	Y	Z			
LED MAX sport ULTRALUX-300W-60D LED FLOOD LIGHT	2	34.800	35.000	16.000	0.000	33.447	0.000	24.7	(C 90, G IMax)	/
LED MAX sport ULTRALUX-300W-60D LED FLOOD LIGHT	3	35.200	35.000	16.000	70.000	33.447	0.000	24.7	(C 90, G IMax)	/



Operator
Telephone
Fax
e-Mail

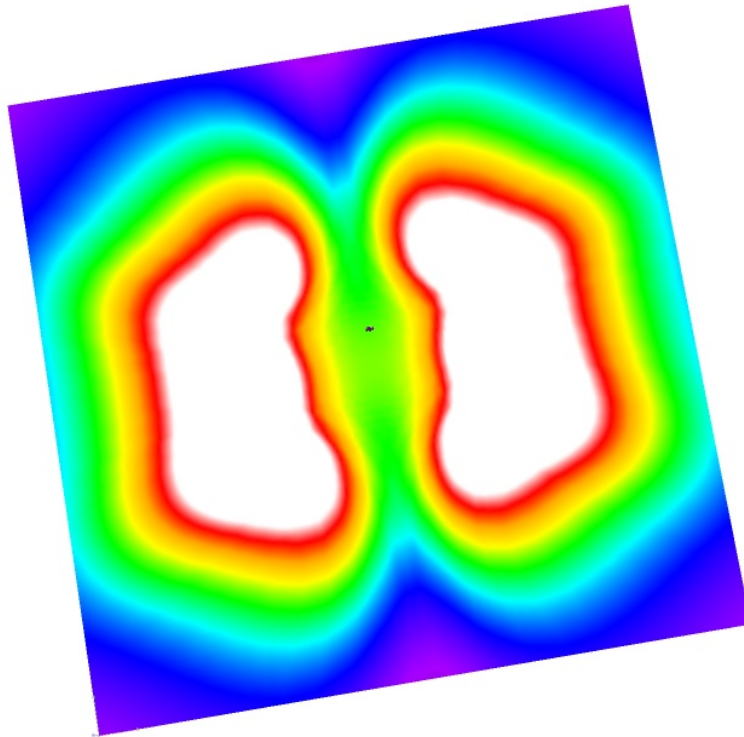
Exterior Scene 1 / 3D Rendering





Operator
Telephone
Fax
e-Mail

Exterior Scene 1 / False Colour Rendering



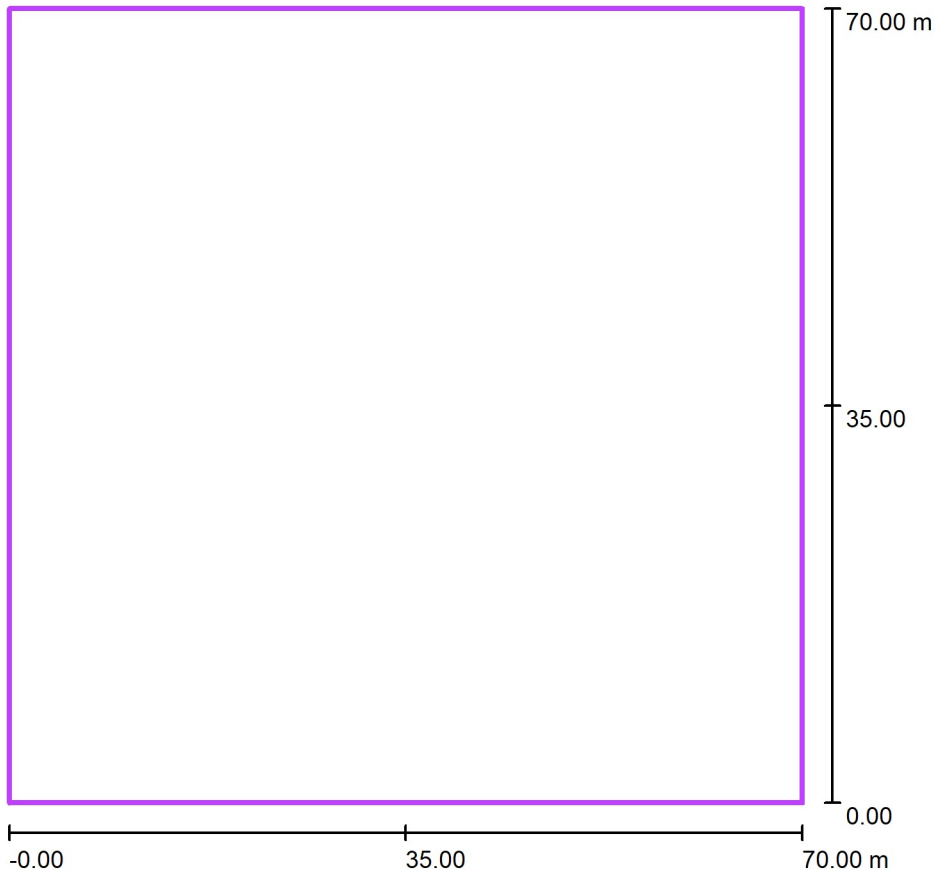
0 5 10 15 20 25 30 35 40

lx



Operator
Telephone
Fax
e-Mail

Exterior Scene 1 / Calculation / Summary



Scale 1 : 668

Position: (35.000 m, 35.000 m, 0.000 m)
 Size: (70.007 m, 70.000 m)
 Rotation: (0.0°, 0.0°, 0.0°)
 Type: Normal, Grid: 17 x 17 Points

Results overview

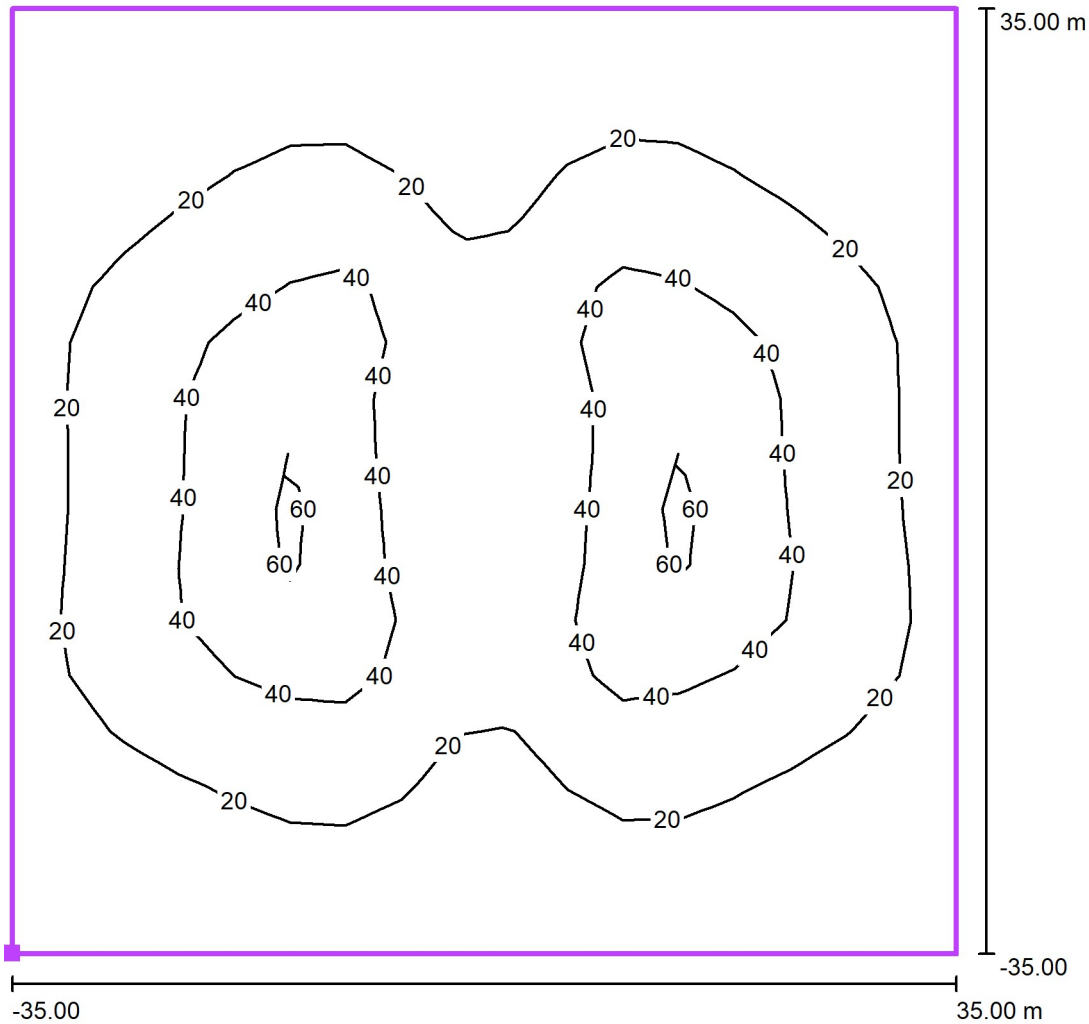
No.	Type	E_{av} [lx]	E_{min} [lx]	E_{max} [lx]	u0	E_{min} / E_{max}	$E_{h\ m} / E_m$	H [m]	Camera
1	perpendicular	25	5.43	66	0.22	0.08	/	0.000	/

$E_{h\ m} / E_m$ = Relationship between middle horizontal and vertical illuminance, H = Measuring Height



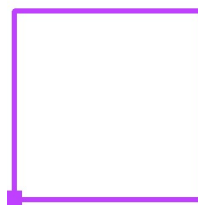
Operator
Telephone
Fax
e-Mail

Exterior Scene 1 / Calculation / Isolines (E, Perpendicular)



Values in Lux, Scale 1 : 561

Position of surface in external scene:
Marked point: (-0.004 m, 0.000 m,
0.000 m)



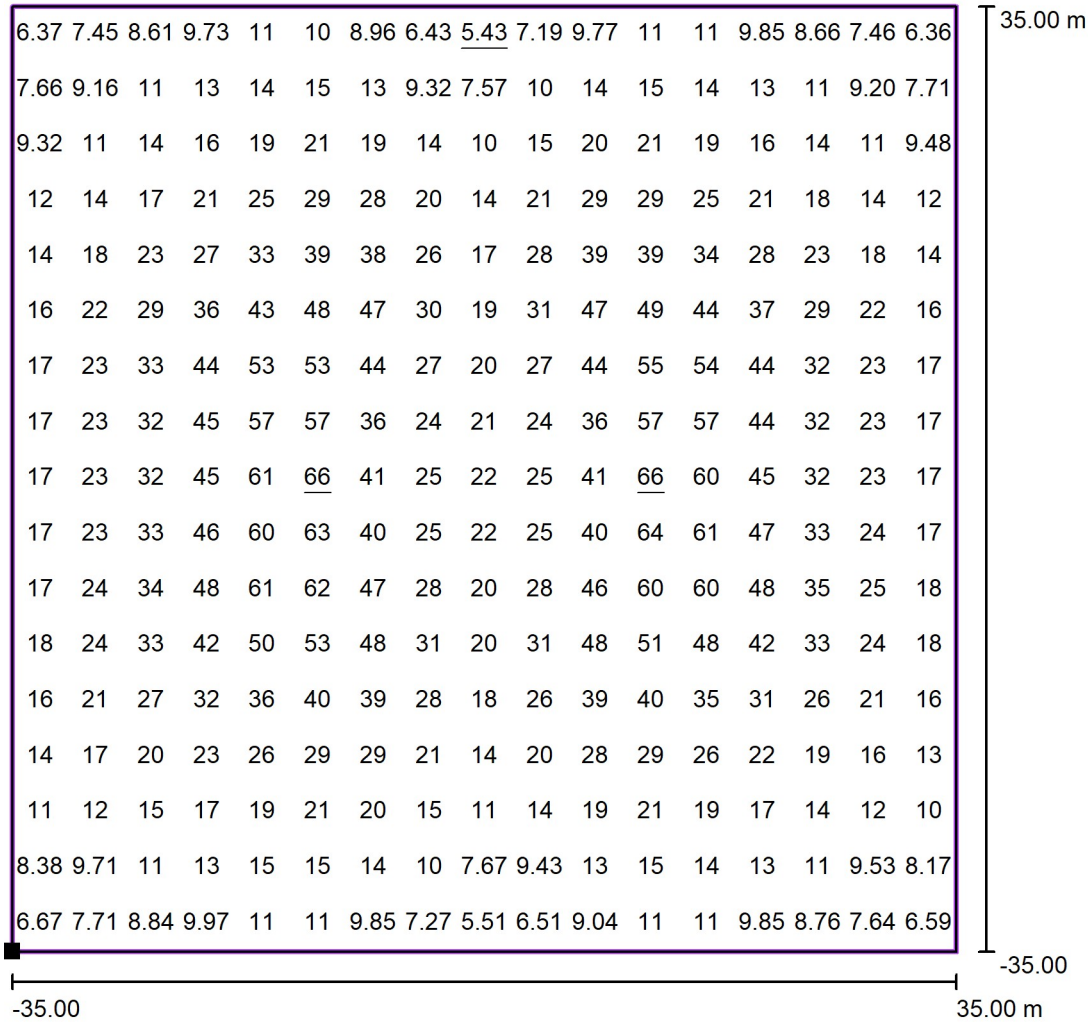
Grid: 17 x 17 Points

E_{av} [lx]	E_{min} [lx]	E_{max} [lx]	u0	E_{min} / E_{max}
25	5.43	66	0.22	0.08



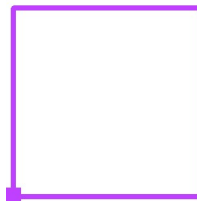
Operator
Telephone
Fax
e-Mail

Exterior Scene 1 / Calculation / Value Chart (E, Perpendicular)



Values in Lux, Scale 1 : 561

Position of surface in external scene:
Marked point: (-0.004 m, 0.000 m, 0.000 m)



Grid: 17 x 17 Points

E_{av} [lx]	E_{min} [lx]	E_{max} [lx]	u0	E_{min} / E_{max}
25	5.43	66	0.22	0.08