

# VOCARE

## LED LIGHT

Innovative LED Light Manufacturer

# MAX SPORT Flood Light



# 175LM/W

**Vocare-Ledlight**

T: +31 (0)85 - 0060455  
E: sales@vocare-ledlight.com  
W: www.vocare-ledlight.com

ADD: Enkweg 6B, 8131 VH, Netherlands



**RoHS**



## Parameter

<b>WATTAGE</b>	480/720/960/1200/1440W
<b>LAMP LUMINOUS FLUX</b>	175LM/W (60°/90°/120°) 165LM/W (30°) 120LM/W (10°)
<b>CRI</b>	Ra>70
<b>CCT</b>	2700-6500K
<b>RATED VOLTAGE</b>	AC 100-240V 277V~, 50/60Hz
<b>POWER FACTOR</b>	>0.95
<b>BEAM ANGLE</b>	10°/30°/60°/90°/120°
<b>IP GRADE</b>	IP66
<b>HEAT-SINK</b>	ALUMINIUM COOLING FIN
<b>OPERATING TEMP</b>	-40°C~60°C



### 480W

84,000LM  
12.0kg  
536x165x579mm



### 720W

126,000LM  
16.0kg  
691x202x579mm



### 960W

168,400LM  
19.9kg  
846x202x579mm



### 1200W

210,000LM  
24.2kg  
1001x277x579mm

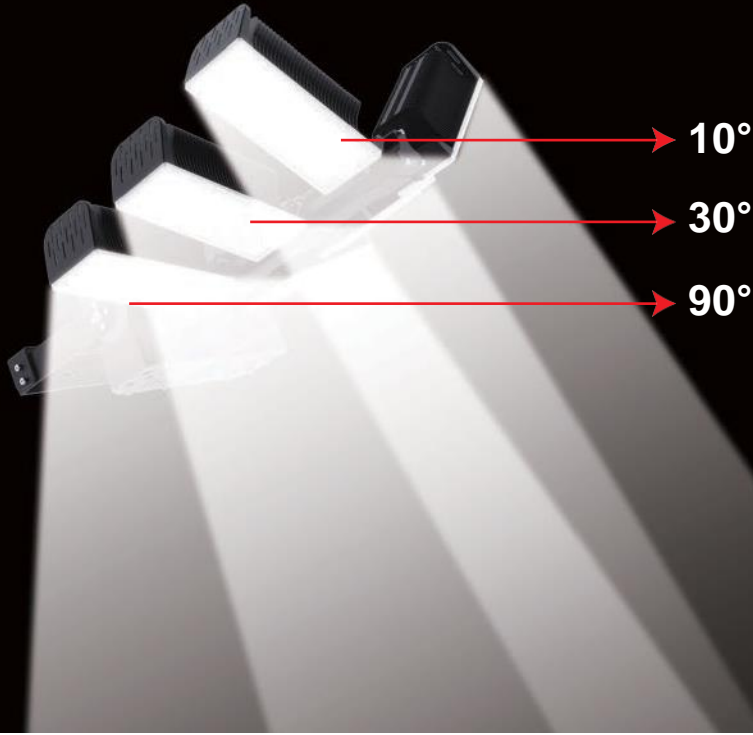


### 1440W

252,000LM  
28.0kg  
1156x277x579mm

## Professional Light Distribution

Multiple optical lens choices are available with angles including 10°/30°/60°/90°/120° to meet the requirements for professional light distribution and an extensive scope of applications.



Module rotatable 360°



Module rotatable 140°

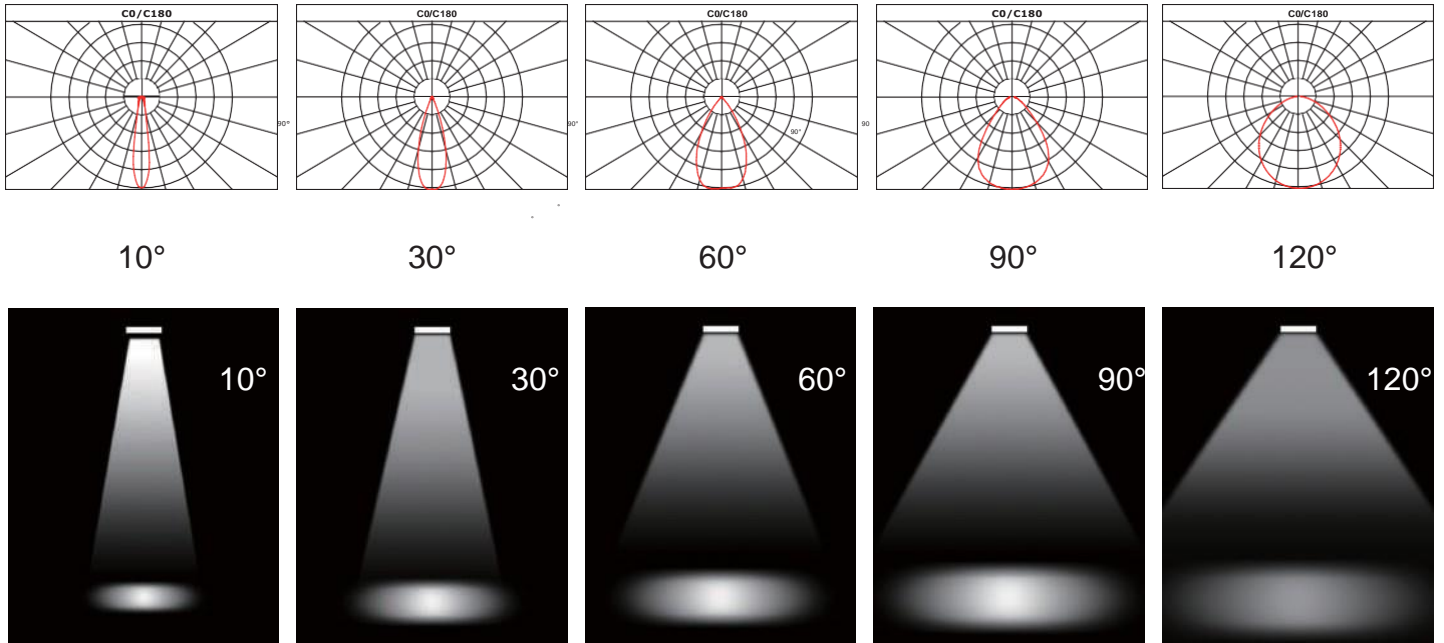


Arc bracket rotatable 250°

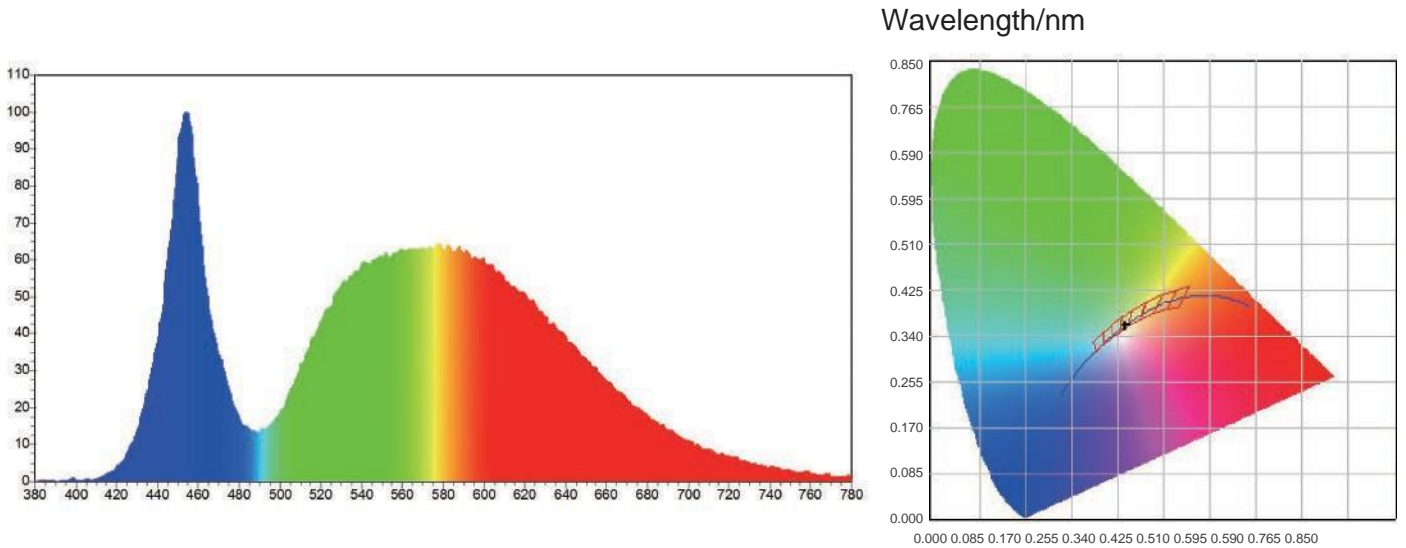
## Original angle scale design



# Light Distribution Curve



# Integrating sphere test report VOC MS-120W-6000K

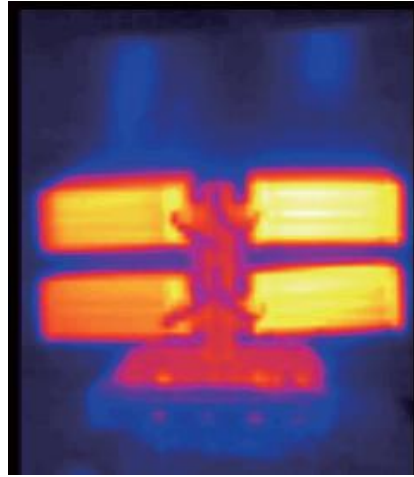


Spectrum		Electrical		
WD:	567.8 nm	I(test):	552.4 mA	
WP:	450.6nm	V:	219.60 V	
HW:	20.0nm	Flux:	21311.77 lm	
R%:	28.7	P:	1 75.550 lm/w	
G%:	44.2	P:	121.400 w	
B%:	37.1	PF:	0.9750	
CIE(x,y):	0.3435 , 0.3585	R1:	R2: 81.0	R3: 79.2
CIE(u,v):	0.2077 , 0.3252	R4:	R5: 75.3	R6: 69.6
Ra:	76.1	R7:	R8: 68.0	R9: 5.9
DUV:	0.0041	R10:	R11: 77.0	R12: 41.6
CCT:	5082 K	R13:	R14: 87.5	R15: 76.5

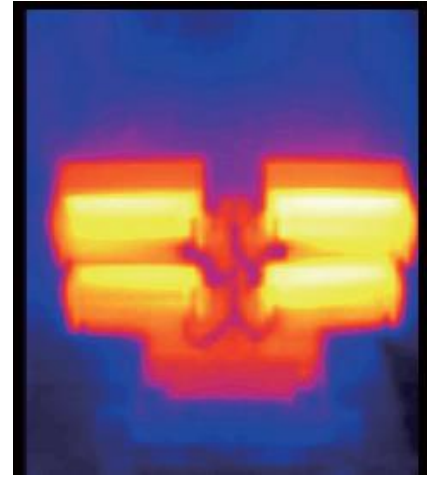
# Temperature Rising Report



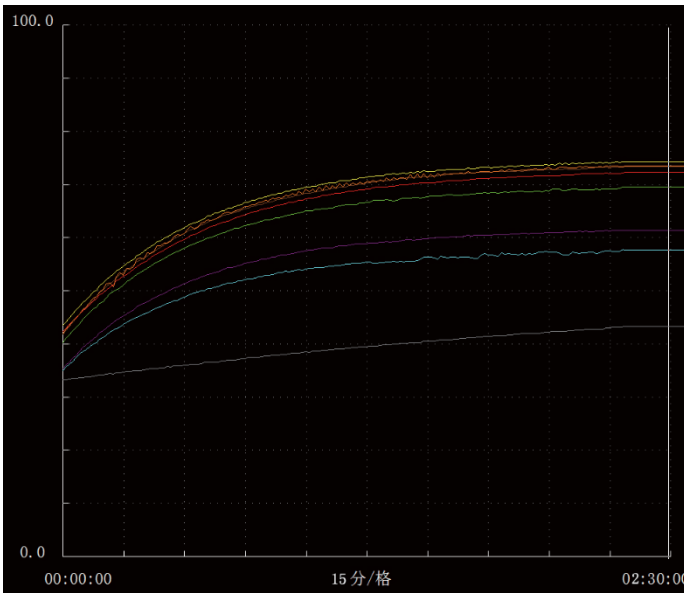
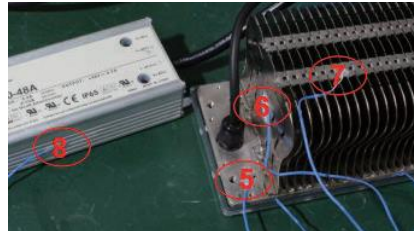
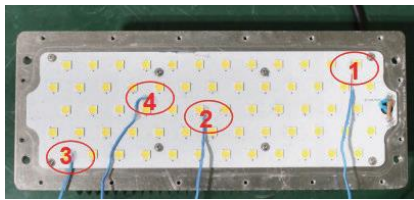
Luminous surface



Back



Overlook



- █ CH1 LED
- █ CH2 LED
- █ CH3 LED
- █ CH4 PCB Boar
- █ CH5 Heat sink
- █ CH6 Heat sink
- █ CH7 Heat sink
- █ CH8 LED Driver

TIME(min)	0:00:00	0:30:00	1:00:00	1:30:00	2:00:00
CH1 LED	30.2	73.3	74.8	75.1	75.3
CH2 LED	30.3	72.5	73.5	74.4	74.6
CH3 LED	30.2	73.4	74.5	75.0	75.8
CH4 PCB Board	30.4	73.8	75.4	76.1	76.5
CH5 Heat sink	30.6	70.2	71.2	71.8	72.0
CH6 Heat sink	30.5	56.6	57.8	58.3	58.5
CH7 Heat sink	30.6	61.4	62.5	63.0	63.1
CH8 LED Driver	30.4	48.6	49.2	50.2	50.4

## Test



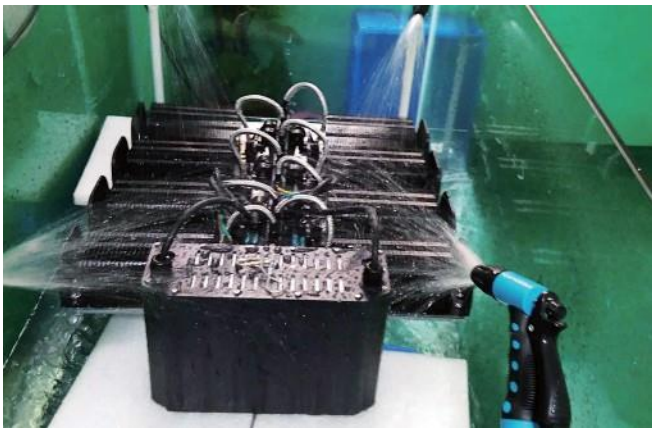
### Salt Spray Test

The heat sink processed by oxidization and powder spraying so that it has good corrosion resistance.



### UV Aging Test

The test time is about 1440 hours. After test the lamp working regularly , no discoloration appearance , no yellowing of the pc lens , no rust of the support.



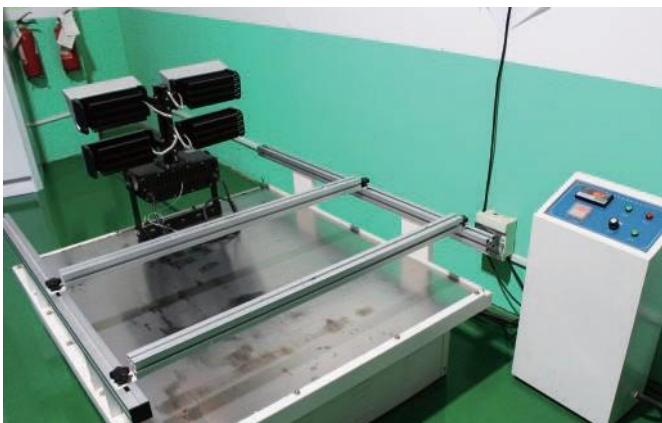
### Waterproof Test

Every lamp will be tested the water-proof at least 2 hours before shipment. The semiautomatic test line make it very efficient to shorten lead time.



### High-Low Temperature Test

The Test equipment opening 4hours, keeping temperature<-40°C, the lamp working fine. The Test equipment opening 4hours, keeping temperature>60°C, the lamp keep working fine.



### Vibration Test

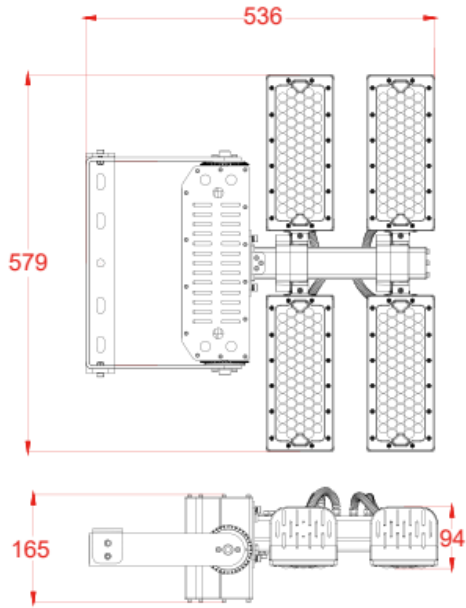
Vibration test is a simulation of various vibration condition including Transportation, Installation and Using , to ensure whether products can withstand or not.



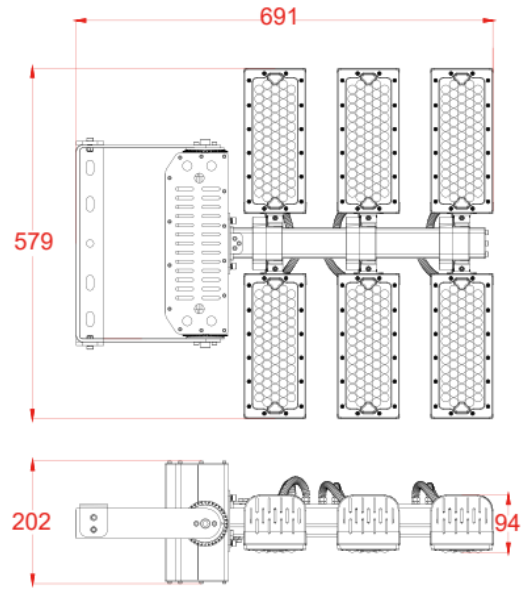
### Withstand Voltage Test

Testing whether the withstand voltage is within the specified value, to avoid sudden voltage surges such as short circuit, operation error, fault, etc, causing breakdown or accidents.

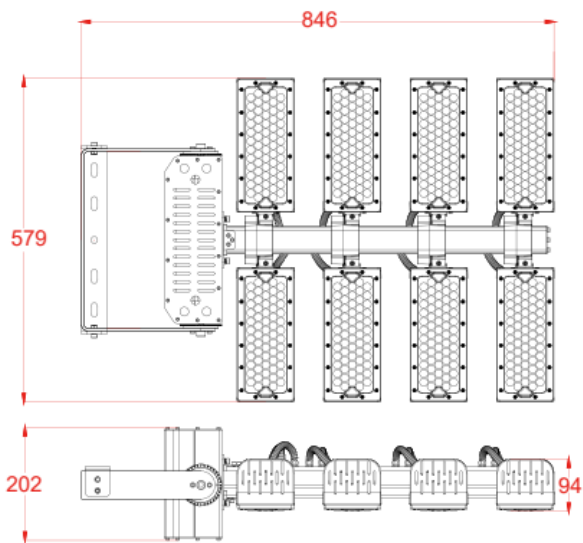
### 480W



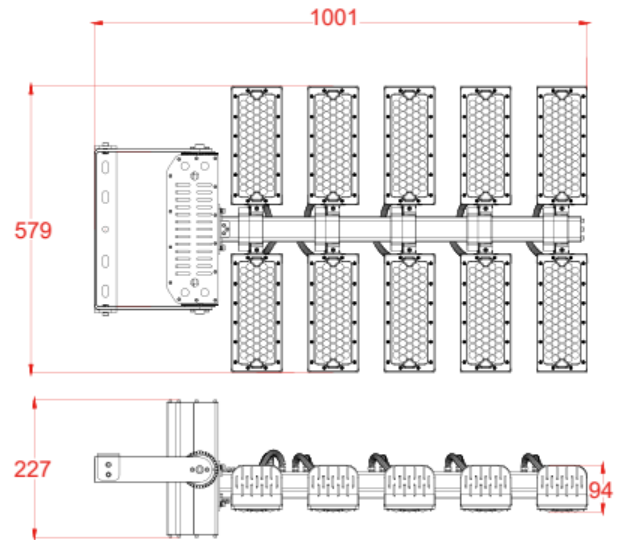
### 720W



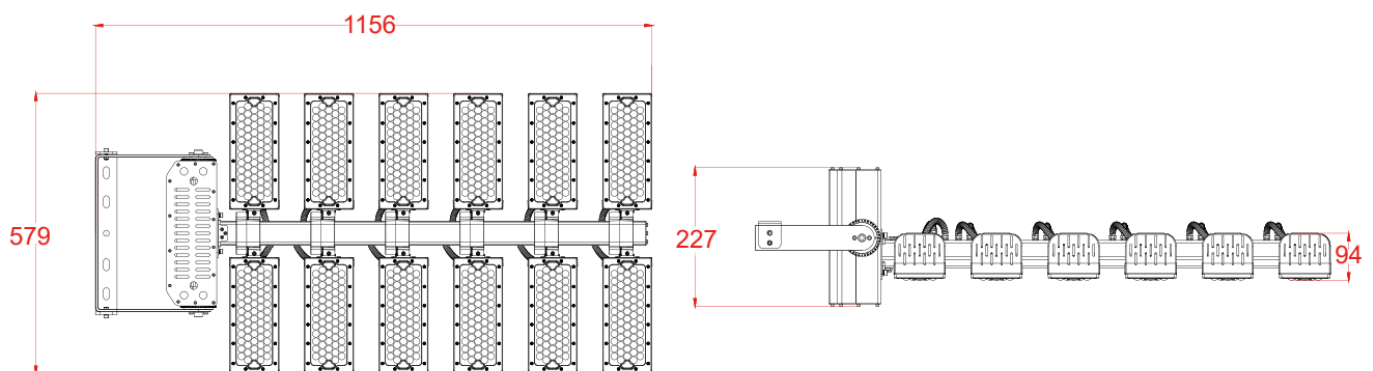
### 960W

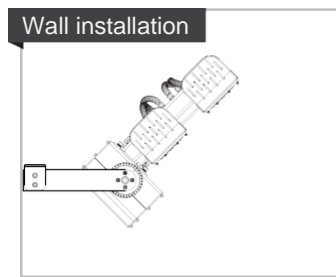
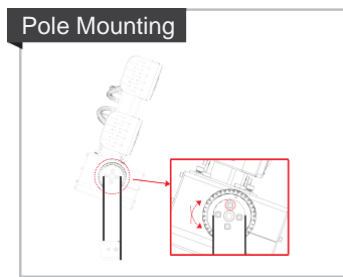


### 1200W



### 1440W





## Application



## Packaging



①



②



③



④



⑤



⑥

Model	Size of Carton	Gross Weight of Carton	Box PCS /Carton
Maxsport-480W	68*49*38cm	16KG	1
Maxsport-720W	70.5*64*38cm	21KG	1
Maxsport-960W	80*67.5*38cm	26KG	1
Maxsport-1200W	95*68*40cm	31KG	1
Maxsport-1440W	108*68*40cm	36KG	1



### Vocare-Ledlight

T: +31 (0)85 - 0060455

E: [sales@vocare-ledlight.com](mailto:sales@vocare-ledlight.com)

W: [www.vocare-ledlight.com](http://www.vocare-ledlight.com)

Add: Enkweg 6B, 8131VH Wijhe, Netherlands