

Gevel-Lux 50W

160LM/W

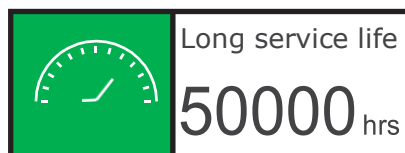
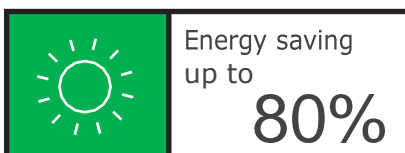


Features:

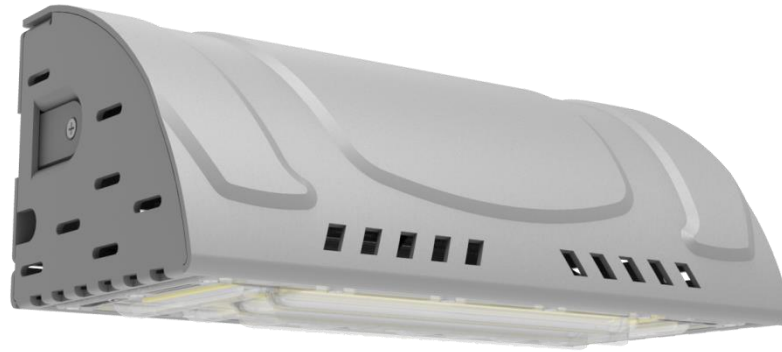
- Wide range of illumination
- Ultra-lightweight
- Easy to install
- IP66 & IK10

Areas of application:

Factory, Warehouse, Harbor, Industrial site, Parking area, Storage boxes, Underground parking garage etc.

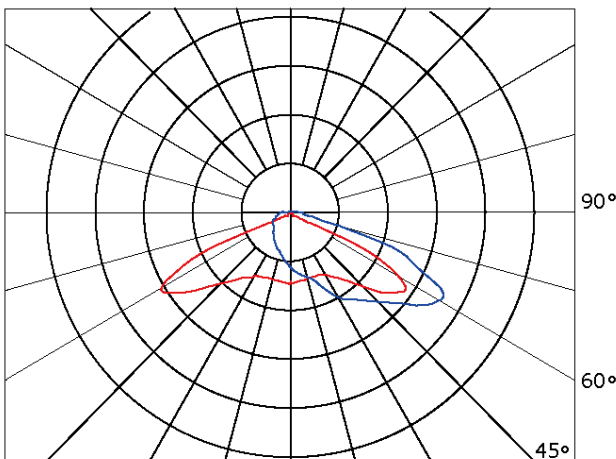


1 Parameter

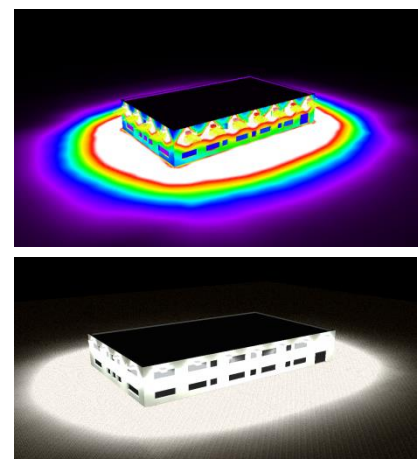


Wattage	CRI	Power Factor
50W	Ra>70/80	>0.95
Operating Temp	IP&IK Grade	Luminous Flux
-40°C ~60°C	IP66 & IK10	8,000LM
Beam Angle	Rated Voltage	
Asymmetric G6	AC 100-240V 277V~, 50/60Hz	

2 Beam angle

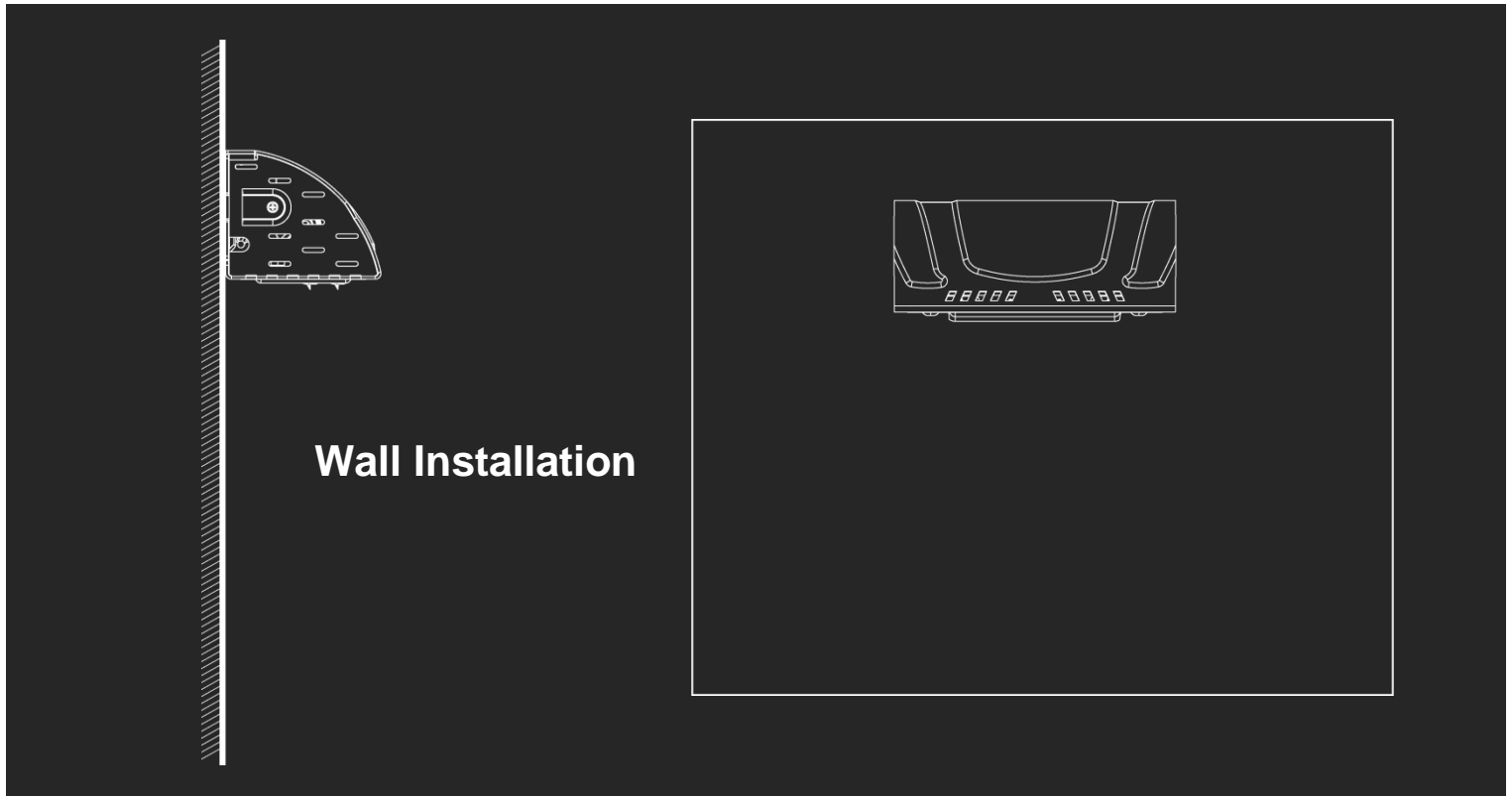


Asymmetric G6

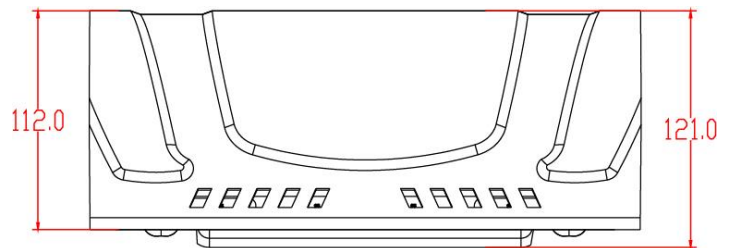
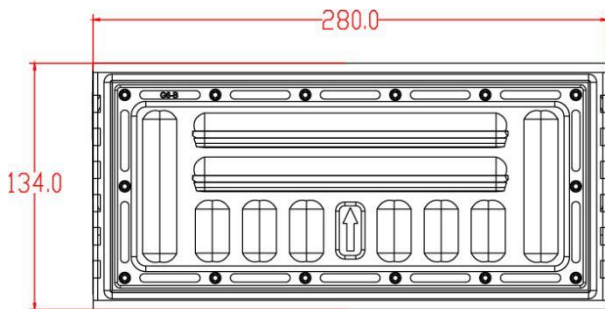


Dialux Simulation

3 Installation



4 Dimensions



5 Packaging

Net weight	Size of box	Weight of box
1.53 KG	31*18.5*17.5cm	1.83KG