

Durable Lighting Made for Industrial Safety



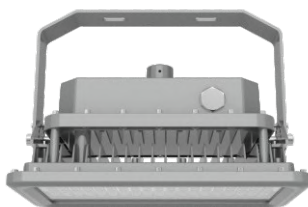
Hazardous Location LED Luminaire A Series (Zone 1)



Specsheet-2024-05 EN



A



A3



A4



Product Description

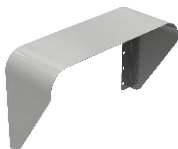
The A Series LED luminaire is the ideal choice for marine and hazardous applications. They can be used in locations where moisture, dirt, dust, corrosion and vibration may be present, or areas where wind, water, snow or high ambient can be expected.

Features

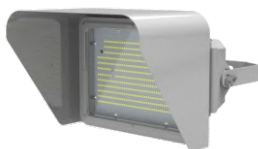
- 0-10V dimming
- High luminous efficacy - Up to 140 lumens per watt
- Compact and robust structure, excellent reliability
- Various installation ways for different applications
- Great impact resistance with IK08/IK10 certified
- Copper-free aluminum housing, great corrosion resistance and cooling performance
- Emergency function optional for A3 and A4

Visor Available

Visor



A



A3



A4



Compliance

ATEX Standard:

Ⓔ II 2 G Ex eb mb IIC T6...T4 Gb

Ⓔ II 2 D Ex tb IIIC T80°C...T100°C Db

IECEX Standard:

Ex eb mb IIC T6...T4 Gb

Ex tb IIIC T80°C...T100°C Db

Zone 1

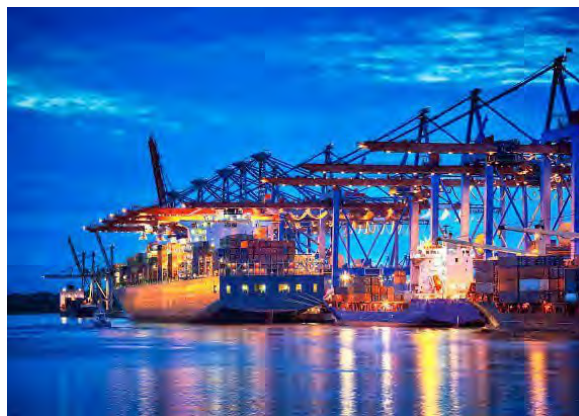
CB (Ref. Certif. No.: DE 2-038462-M1)

IP66/IP67

IK08 (glass cover)

IK10 (with wire guard)

1000 hours salt spray



Application

- Power Plants
- Heavy Industrials Storage Facility
- Paper mills
- Wastewater Treatment Plants
- Loading Docks Platforms
- Offshore Environments
- Chemical Processing Facility
- Petrochemical Processing Facility
- Metallurgical Industry
- Coal Mine
- Food and Alcohol industry

Warranty

3-Year Standard Warranty

LED lumen Maintenance: L70> 78,000 Operation Hours@55°C

Technical Parameter

• Electrical

Specification	EX-80W-A YZDAF	EX-100W-A YZDAF
Rated Power	80W	100W
Input Voltage	200-250VAC	
Input Frequency	50/60Hz	
Power Factor	> 0.95	
Emergency Function	No emergency function	

• Optical

Specification	EX-80W-A YZDAF	EX-100W-A YZDAF
Lumen Output	11200lm	14000lm
Lumens Per Watt	140lm/W	
CCT	2200K-7000K	
CRI	> 70	
Beam Angle	40°/45°/60°/90°	
Dimming	Both non-dimmable and 0-10V dimming are available	

• Environmental

Specification	EX-80W-A YZDAF	EX-100W-A YZDAF
Ambient Operating Temperature	T5: -40°C to +45°C (-40°F to +113°F); T6: -40°C to +40°C (-40°F to +104°F)	

• Mechanical

Specification	EX-80W-A YZDAF	EX-100W-A YZDAF
Housing Material	Copper-free aluminum	
Lens	Tempered glass & PC	
Hardware	Stainless steel	
Fixture Color	Gray RAL7040 (Standard)	
Protection	IP66/IP67/IK08 (glass cover)/IK10 (with wire guard)	
Mounting	Ceiling, Wall, Hook, Trunnion, Pole, Stanchion	
Cable Entries*	Side: 3/4 NPT, M20, M25, 1/2NPT Top: 3/4 NPT, M25	

*Cable Entries: For side and top, 3/4 NPT is standard. If others are required, customer needs to indicate when placing an order.

Technical Parameter

• Electrical

Specification	EX-150W-A3 YZDAF	EX-180W-A3 YZDAF	EX-200W-A3 YZDAF
Rated Power	150W	180W	200W
Input Voltage	200-250VAC		
Input Frequency	50/60Hz		
Power Factor	> 0.95		
Emergency Function	No emergency function		

• Optical

Specification	EX-150W-A3 YZDAF	EX-180W-A3 YZDAF	EX-200W-A3 YZDAF
Lumen Output	21000lm	25200lm	28000lm
Lumens Per Watt	140lm/W		
CCT	2200K-7000K		
CRI	> 70		
Beam Angle	40°/45°/60°/90°		
Dimming	Both non-dimmable and 0-10V dimming are available		

• Environmental

Specification	EX-150W-A3 YZDAF	EX-180W-A3 YZDAF	EX-200W-A3 YZDAF
Ambient Operating Temperature	T5: -40°C to +45°C (-40°F to +113°F); T6: -40°C to +40°C (-40°F to +104°F)		

• Mechanical

Specification	EX-150W-A3 YZDAF	EX-180W-A3 YZDAF	EX-200W-A3 YZDAF
Housing Material	Copper-free aluminum		
Lens	Tempered glass & PC		
Hardware	Stainless steel		
Fixture Color	Gray RAL7040 (Standard)		
Protection	IP66/IP67/IK08 (glass cover)/IK10 (with wire guard)		
Mounting	Ceiling, Wall, Hook, Pole, Stanchion		
Cable Entries*	Side: 3/4 NPT, M20, M25, 1/2NPT Top: 3/4 NPT, M25		

*Cable Entries: For side and top, 3/4 NPT is standard. If others are required, customer needs to indicate when placing an order.

Technical Parameter

• Electrical

Specification	EX-250W-A4 YZDAF	EX-300W-A4 YZDAF	EX-400W-A4 YZDAF
Rated Power	250W	300W	400W
Input Voltage	200-250VAC		
Input Frequency	50/60Hz		
Power Factor	> 0.95		
Emergency Function	No emergency function		

• Optical

Specification	EX-250W-A4 YZDAF	EX-300W-A4 YZDAF	EX-400W-A4 YZDAF
Lumen Output	35000lm	42000lm	56000lm
Lumens Per Watt	140lm/W		
CCT	2200K-7000K		
CRI	> 70		
Beam Angle	40°/45°/60°/90°		
Dimming	Both non-dimmable and 0-10V dimming are available		

• Environmental

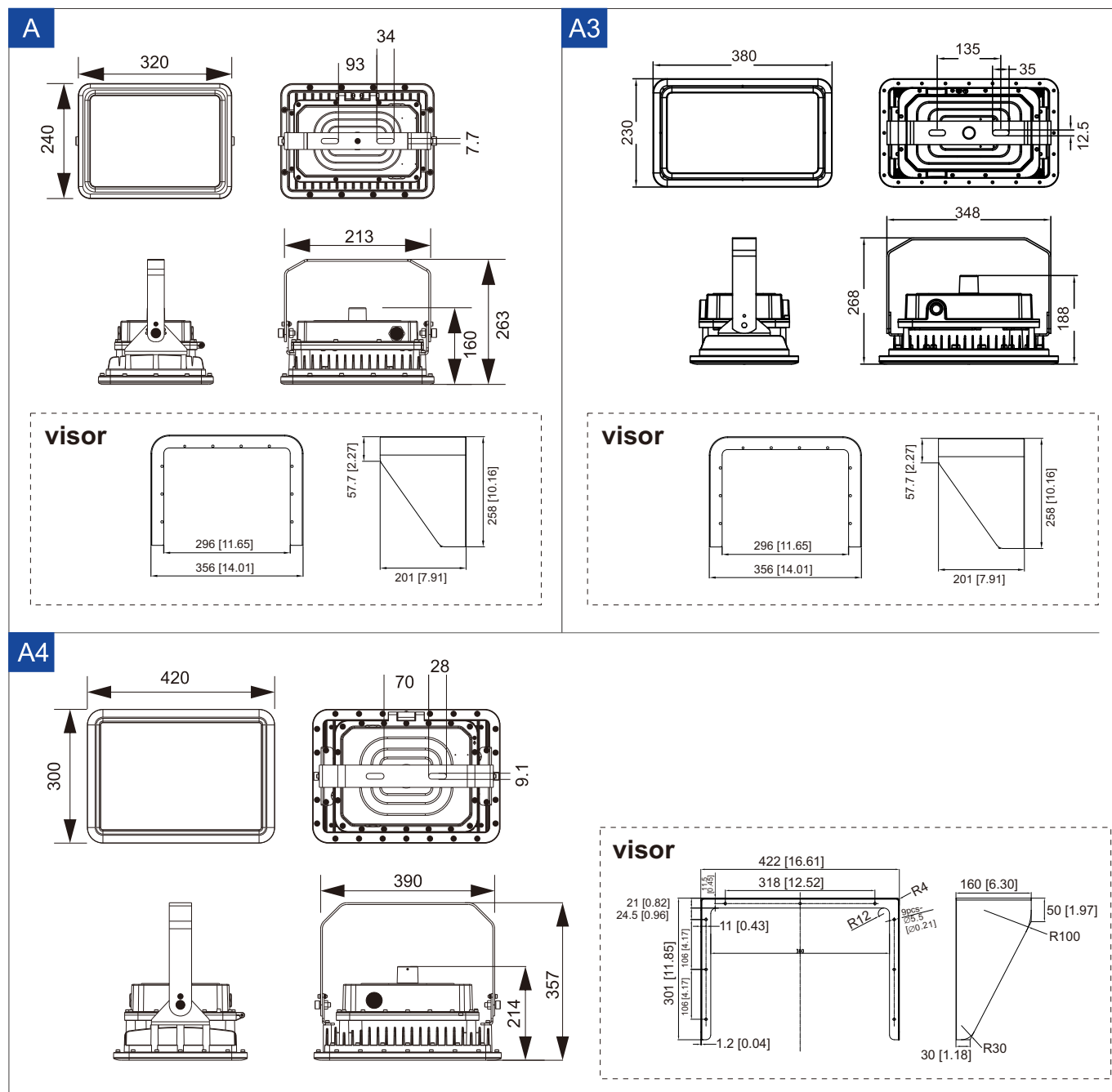
Specification	EX-250W-A4 YZDAF	EX-300W-A4 YZDAF	EX-400W-A4 YZDAF
Ambient Operating Temperature	T5: -40°C to +40°C (-40°F to +104°F)	T5: -40°C to +40°C (-40°F to +104°F)	T5: -40°C to +25°C (-40°F to +77°F)

• Mechanical

Specification	EX-250W-A4 YZDAF	EX-300W-A4 YZDAF	EX-400W-A4 YZDAF
Housing Material	Copper-free aluminum		
Lens	Tempered glass & PC		
Hardware	Stainless steel		
Fixture Color	Gray RAL7040 (Standard)		
Protection	IP66/IP67/IK08 (glass cover)/IK10 (with wire guard)		
Mounting	Ceiling, Wall, Hook, Pole, Stanchion		
Cable Entries*	Side: 3/4 NPT, M20, M25, 1/2NPT Top: 3/4 NPT, M25		

*Cable Entries: For side and top, 3/4 NPT is standard. If others are required, customer needs to indicate when placing an order.

Product Dimensions (all in millimeters)

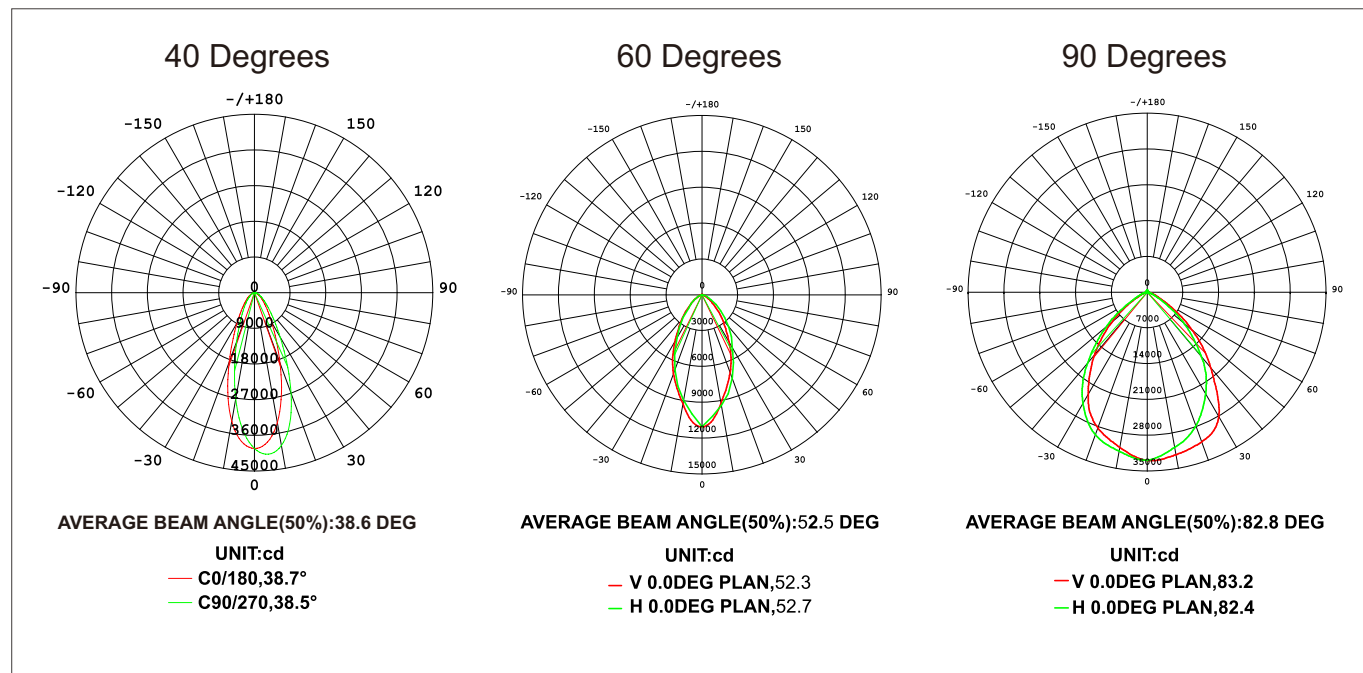


• Packing Information

Model	Net Weight*	Gross Weight*	Quantity/Carton	Package Dimensions (LxWxH)
EX-XXXW-A YZDAF	6.95kg	9.50kg	1 pc	450x340x370mm
EX-XXXW-A3 YZDAF	8.30kg	11.35kg	1 pc	470x370x300mm
EX-XXXW-A4 YZDAF	15.1kg	18.55kg	1 pc	520x490x380mm

*Please note that net weight and gross weight may be subject to change because of actual configuration.

Photometric



Ordering Guide

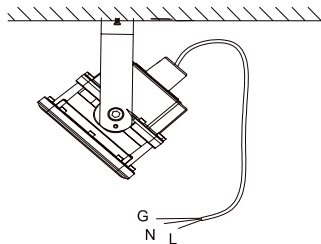
EX -
 XXXW -
 A/A3/A4
Y
Z
D
A
F

1 2 3 4 5 6 7 8

1.Model Series	2.Wattage	3.Product Code	4.Dimmable Optinal
Explosion Proof Light	A: 80/100W A3:150/180/200W A4: 250/300/400W	A A3 A4	Y: Dimmable N: Non-dimmable
5.Color Temp.	6.Beam Angle	7.Glass Type	8.Optional
22=2200K, 30=3000K, ..., 70=7000K	D40=40°, D45=45° D60=60°, D90=90°	A=blank: flat glass A=C: Drop lens & wire guard	F: for food zone or blank

Mounting Methods and Accessories

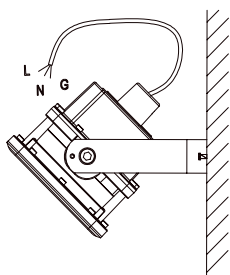
• Option 1: Ceiling Mounting



• Accessory



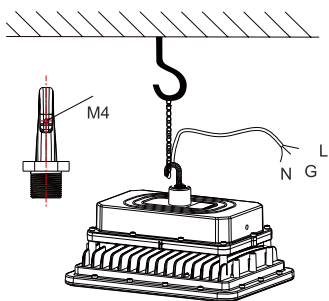
• Option 2: Wall Mounting



• Accessory



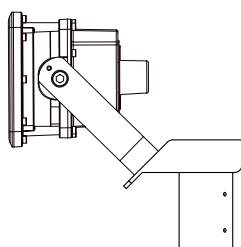
• Option 3: Hook Mounting



• Accessories



• Option 4: Trunnion Mounting (Only for A)

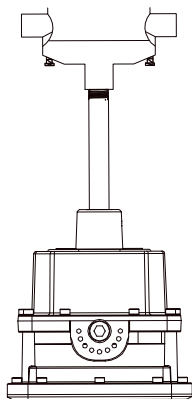


• Accessory



Mounting Methods and Accessories

• Option 5: Pole Mounting (Vertical)



• Accessories

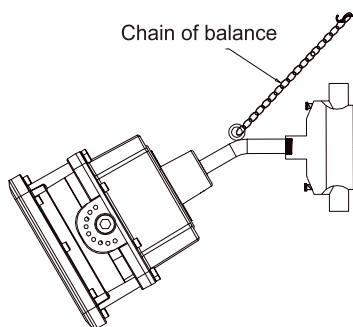


Junction Box
EX-HD51-KB1



Pole
Ex-Straight Pipe

• Option 6: Pole Mounting (Non-vertical)



• Accessories



Junction Box
EX-HD51-KB1

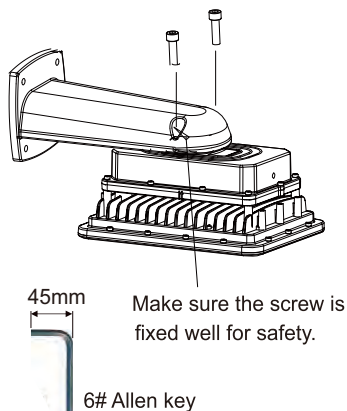


Pole
Ex-Bended Pipe



Pendant Chain
Ex-Straight Chain

• Option 7: Stanchion Mounting on the Wall



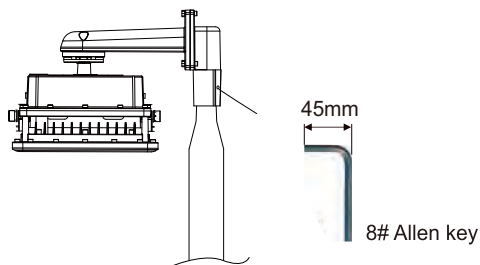
• Accessory



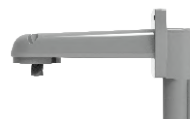
Stanchion Arm
Ex-MArm

Mounting Methods and Accessories

• Option 8: Stanchion Mounting on the Pole (90 Degree)

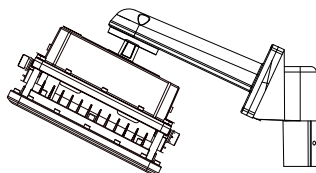


• Accessories



EX-90PSupport

• Option 9: Stanchion Mounting on the Pole (25 Degree)

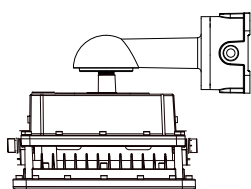


• Accessories



EX-25PSupport

• Option 10: Wall Mounting with Junction Box (90 Degree)

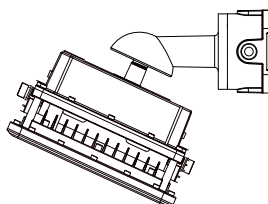


• Accessory



**Stanchion Arm
EX-HD51-KYD 90**

• Option 11: Wall Mounting with Junction Box (25 Degree)



• Accessory



**Stanchion Arm
EX-HD51-KYD 25**